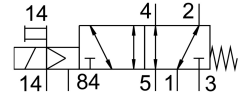


# Solenoid valve VUVS-L30-M52-MZD-G38-F8-1B2

Part number: 575607

FESTO



## Data sheet

| Feature                       | Value                                    |
|-------------------------------|--|
| Valve function                | 5/2-way, monostable                      |
| Type of actuation             | Electric                                 |
| Valve size                    | 31 mm                                    |
| Standard nominal flow rate    | 2300 l/min                               |
| pneumatic working port        | G3/8                                     |
| Operating voltage             | 24V DC                                   |
| Operating pressure            | -0.09 MPa...1 MPa<br>-0.9 bar...10 bar   |
| Design                        | Piston gate valve                        |
| Type of reset                 | Mechanical spring                        |
| Approval                      | c UL us - Recognized (OL)                |
| Maritime classification       | See certificate                          |
| Certificate issuing authority | DNVGL-TAA000011J                         |
| Degree of protection          | IP65<br>With plug socket<br>To IEC 60529 |
| Nominal size                  | 9.4 mm                                   |
| Exhaust-air function          | With flow control option                 |
| Sealing principle             | Soft                                     |
| Mounting position             | optional                                 |
| Manual override               | Detenting<br>Non-detenting               |
| Type of piloting              | Pilot actuated                           |
| Pilot air supply              | External                                 |
| Flow direction                | Reversible                               |
| lap                           | Positive overlap                         |
| Pilot pressure                | 0.25 MPa...1 MPa<br>2.5 bar...10 bar     |
| b value                       | 0.4                                      |
| C value                       | 9.9 l/sbar                               |
| Switching time off            | 62 ms                                    |
| Switching time on             | 17 ms                                    |
| Duty cycle                    | 100%                                     |

| Feature                                | Value  |
|--|--|
| Max. positive test pulse with 0 signal | 2000 µs  |
| Max. negative test pulse with 1 signal | 3600 µs  |
| Characteristic coil data               | 24 V DC: 3.3 W   |
| Permissible voltage fluctuations       | +/- 10 %   |
| Operating medium                       | Compressed air to ISO 8573-1:2010 [7:4:4]  |
| Note on operating and pilot medium     | Lubricated operation possible (in which case lubricated operation will always be required) |
| Vibration resistance                   | Transport application test with severity level 2 to FN 942017-4 and EN 60068-2-6           |
| Shock resistance                       | Shock test with severity level 2 to FN 942017-5 and EN 60068-2-27                          |
| Corrosion resistance class CRC         | 2 - Moderate corrosion stress  |
| Media temperature                      | -10 °C...60 °C   |
| Pilot medium                           | Compressed air to ISO 8573-1:2010 [7:4:4]  |
| Ambient temperature                    | -10 °C...60 °C   |
| Product weight                         | 500 g  |
| Electrical connection                  | Type B<br>To industry standard (11 mm)   |
| Type of mounting                       | Either:<br>On manifold rail<br>With through-hole   |
| Breather connection                    | Not ducted   |
| Pilot exhaust port 84                  | M5   |
| Pilot air port 14                      | G1/8   |
| Pneumatic connection, port 1           | G3/8   |
| Pneumatic connection, port 2           | G3/8   |
| Pneumatic connection, port 3           | G3/8   |
| Pneumatic connection, port 4           | G3/8   |
| Pneumatic connection, port 5           | G3/8   |
| Note on materials                      | RoHS-compliant   |
| Material seals                         | HNBR<br>NBR  |
| Material housing                       | Die-cast aluminium<br>Painted  |
| Material piston slide                  | Wrought aluminium alloy  |
| Material screws                        | Nickel-plated steel  |