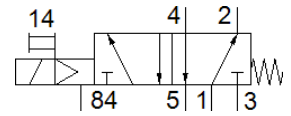
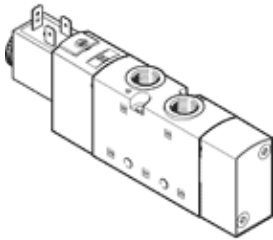


# solenoid valve

## VUVS-L25-M52-MD-G14-F8-1B2

Part number: 575513

FESTO



## Data sheet

| Feature                                 | Value                                                                                          |
|-----------------------------------------|------------------------------------------------------------------------------------------------|
| Valve function                          | 5/2 monostable                                                                                 |
| Type of actuation                       | electrical                                                                                     |
| Valve size                              | 26.5 mm                                                                                        |
| Standard nominal flow rate              | 1,300 l/min                                                                                    |
| Operating pressure MPa                  | 0.25 ... 1 MPa                                                                                 |
| Operating pressure                      | 2.5 ... 10 bar                                                                                 |
| Design structure                        | Piston slide                                                                                   |
| Type of reset                           | mechanical spring                                                                              |
| Authorisation                           | c UL us - Recognized (OL)                                                                      |
| Maritime classification                 | see certificate                                                                                |
| Certificate issuing department          | DNVGL-TAA000011J                                                                               |
| Protection class                        | IP65<br>with plug socket<br>to IEC 60529                                                       |
| Nominal size                            | 6.9 mm                                                                                         |
| Exhaust-air function                    | throttleable                                                                                   |
| Sealing principle                       | soft                                                                                           |
| Assembly position                       | Any                                                                                            |
| Manual override                         | detenting<br>Pushing                                                                           |
| Type of piloting                        | Piloted                                                                                        |
| Pilot air supply                        | Internal                                                                                       |
| Flow direction                          | non reversible                                                                                 |
| Overlap                                 | Positive overlap                                                                               |
| b value                                 | 0.4                                                                                            |
| C value                                 | 5.3 l/sbar                                                                                     |
| Switching time off                      | 47 ms                                                                                          |
| Switching time on                       | 12 ms                                                                                          |
| Duty cycle                              | 100 %                                                                                          |
| Max. positive test pulse with logic 0   | 2,000 µs                                                                                       |
| Max. negative test pulse with logic 1   | 3,600 µs                                                                                       |
| Characteristic coil data                | 24 V DC: 3.3 W                                                                                 |
| Permissible voltage fluctuation         | +/- 10 %                                                                                       |
| Operating medium                        | Compressed air in accordance with ISO8573-1:2010 [7:4:4]                                       |
| Note on operating and pilot medium      | Lubricated operation possible (subsequently required for further operation)                    |
| Vibration resistance                    | Transport application test at severity level 2 in accordance with FN 942017-4 and EN 60068-2-6 |
| Shock resistance                        | Shock test with severity level 2 in accordance with FN 942017-5 and EN 60068-2-27              |
| Corrosion resistance classification CRC | 2 - Moderate corrosion stress                                                                  |
| Medium temperature                      | -10 ... 60 °C                                                                                  |
| Pilot medium                            | Compressed air in accordance with ISO8573-1:2010 [7:4:4]                                       |
| Ambient temperature                     | -10 ... 60 °C                                                                                  |
| Product weight                          | 363 g                                                                                          |
| Electrical connection                   | Plug pattern type B to EN 175301-803                                                           |

| Feature                       | Value                                             |
|-------------------------------|---------------------------------------------------|
|                               | To industry standard (11 mm)                      |
| Mounting type                 | on manifold rail<br>with through hole<br>Optional |
| Scavenging orifice connection | Non-ducted                                        |
| Pilot exhaust port 84         | M5                                                |
| Pneumatic connection, port 1  | G1/4                                              |
| Pneumatic connection, port 2  | G1/4                                              |
| Pneumatic connection, port 3  | G1/4                                              |
| Pneumatic connection, port 4  | G1/4                                              |
| Pneumatic connection, port 5  | G1/4                                              |
| Materials note                | Conforms to RoHS                                  |
| Material seals                | HNBR<br>NBR                                       |
| Material housing              | Aluminium die cast<br>Painted                     |
| Material Piston slide         | Wrought Aluminium alloy                           |
| Material screws               | Galvanised steel                                  |