

basic valve

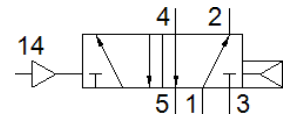
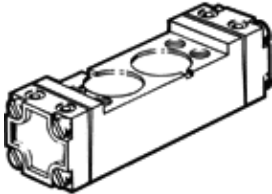
C-5/2-1/4

Part number: 5750

Classic - do not use for new projects

Modern alternatives can be found by entering the first four characters of the type code in the search field.

FESTO



Data sheet

Feature	Value
Standard nominal flow rate	1,400 l/min
Operating pressure	1 ... 10 bar
Nominal size	6.5 mm
Assembly position	Any
Manual override	Pushing
Pilot pressure	2 ... 10 bar
Max. switching frequency	40 Hz
Switching time off	28 ms
Switching time on	24 ms
Operating medium	Compressed air in accordance with ISO8573-1:2010 [7:4:4]
Note on operating and pilot medium	Lubricated operation possible (subsequently required for further operation)
PWIS conformity	VDMA24364 zone III
Medium temperature	-10 ... 60 °C
Mounting type	On sub-base
Pilot air port 12	G1/8
Pilot air port 14	G1/8
Pneumatic connection, port 1	G1/4
Pneumatic connection, port 2	G1/4
Pneumatic connection, port 3	G1/4
Pneumatic connection, port 4	G1/4
Pneumatic connection, port 5	G1/4
Material seals	NBR
Material housing	Wrought Aluminium alloy
Material membrane	PUR