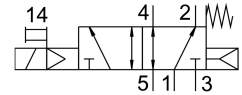
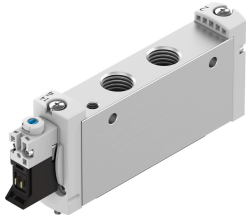


Solenoid valve VUVG-L18-M52-RT-G14-1P3

Part number: 574428

FESTO



Data sheet

| Feature | Value |
|--|--|
| Valve function | 5/2-way, monostable |
| Type of actuation | Electric |
| Valve size | 18 mm |
| Standard nominal flow rate | 1300 l/min |
| pneumatic working port | G1/4 |
| Operating voltage | 24V DC |
| Operating pressure | 0.25 MPa...0.8 MPa 2.5 bar...8 bar |
| Design | Piston gate valve |
| Type of reset | Mechanical spring Pneumatic spring |
| Approval | RCM trademark c UL us - Recognized (OL) |
| Degree of protection | IP40 IP65 With plug socket |
| Nominal size | 6.9 mm |
| Exhaust-air function | With flow control option |
| Sealing principle | Soft |
| Mounting position | optional |
| Manual override | Detenting Non-detenting Covered |
| Type of piloting | Pilot actuated |
| Pilot air supply | Internal |
| lap | Indefinite overlap |
| Pilot pressure | 0.25 MPa...0.8 MPa 2.5 bar...8 bar |
| Switching time off | 31 ms |
| Switching time on | 15 ms |
| Duty cycle | 100% |
| Max. positive test pulse with 0 signal | 700 µs |
| Max. negative test pulse with 1 signal | 900 µs |

| Feature | Value |
|--|--|
| Characteristic coil data | 24 V DC: 1.0 W 24 V DC: low-current phase 0.3 W, high-current phase 1.0 W |
| Permissible voltage fluctuations | +/- 10 % |
| Operating medium | Compressed air to ISO 8573-1:2010 [7:4:4] |
| Note on operating and pilot medium | Lubricated operation possible (in which case lubricated operation will always be required) |
| Vibration resistance | Transport application test with severity level 2 to FN 942017-4 and EN 60068-2-6 |
| Restrictions for environmental and media temperature | -5 ... 50° C Without holding current reduction |
| Shock resistance | Shock test with severity level 2 to FN 942017-5 and EN 60068-2-27 |
| Corrosion resistance class CRC | 2 - Moderate corrosion stress |
| LABS (PWIS) conformity | VDMA24364-B1/B2-L |
| Media temperature | -5 °C...60 °C |
| Ambient temperature | -5 °C...60 °C |
| Product weight | 154 g |
| Electrical connection | Via electrical sub-base |
| Type of mounting | Either: On manifold rail With through-hole |
| Pneumatic connection, port 1 | G1/4 |
| Pneumatic connection, port 2 | G1/4 |
| Pneumatic connection, port 3 | G1/4 |
| Pneumatic connection, port 4 | G1/4 |
| Pneumatic connection, port 5 | G1/4 |
| Note on materials | RoHS-compliant |
| Material seals | HNBR NBR |
| Material housing | Wrought aluminium alloy |