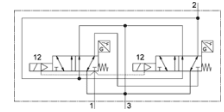
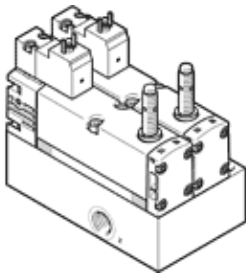


control block VOFA-L26-T32C-M-G14-1C1-ANP

Part number: 574012

FESTO



Data sheet

| Feature | Value |
|---|--|
| Valve function | 3/2 closed, monostable |
| Type of actuation | electrical |
| Width | 65 mm |
| Standard nominal flow rate | 1,050 l/min |
| Operating pressure MPa | 0.3 ... 1 MPa |
| Operating pressure | 3 ... 10 bar |
| Design structure | Piston slide |
| Type of reset | mechanical spring |
| Protection class | IP65 NEMA 4 |
| Authorisation | c UL us - Recognized (OL) |
| KC mark | KC-EMV |
| CE mark (see declaration of conformity) | to EU directive for EMC to EU directive for machinery |
| UKCA marking (see declaration of conformity) | To UK instructions for EMC To UK instructions for machines |
| Certificate issuing department | UL MH19482 |
| Exhaust-air function | throttleable |
| Sealing principle | soft |
| Assembly position | Any |
| Conforms to standard | EN 60947-5-2 |
| Manual override | None |
| Type of piloting | Piloted |
| Pilot air supply | Internal |
| Flow direction | non reversible |
| Measuring principle | Inductive |
| Overlap | Positive overlap |
| Reverse polarity protection sensor | For all electrical connections |
| Safety function | Exhausting Manipulation/start-up protection |
| Performance level (PL) | Vent/up to Category 4, PL e Protection against manipulation, prevention of unexpected start-up, up to Category 4, Performance Level e |
| Note on forced dynamisation | Switching frequency at least once a week |
| Signal status display | with accessories |
| Switching position sensing | Normal position with sensor |
| Switching status display sensor | LED |
| Pilot pressure MPa | 0.3 ... 1 MPa |
| Pilot pressure | 3 ... 10 bar |
| Suitability for vacuum | No |
| Standard flow rate exhaust 0.6->0 MPa (6->0 bar, 87->0 psi) | 2,650 l/min |
| Standard flow rate exhaust 0.6->0 MPa (6->0 bar, 87->0 psi) in the event of a fault | 1,050 l/min |
| Switching time off | 54 ms |
| Switching time on | 24 ms |
| Valve - sensor switching time on | 58 ms |

| Feature | Value |
|--|--|
| Valve - sensor switching time off | 11 ms |
| Duty cycle | 100 % |
| Max. positive test pulse with logic 0 | 1,000 µs |
| Max. negative test pulse with logic 1 | 800 µs |
| Switch output | NPN |
| Characteristic coil data | 24 V DC: 1.8 W |
| Permissible voltage fluctuation | -15 % / +10 % |
| Operating medium | Compressed air in accordance with ISO8573-1:2010 [7:4:4] |
| Note on operating and pilot medium | Lubricated operation possible (subsequently required for further operation) |
| Vibration resistance | Transport application test at severity level 2 in accordance with FN 942017-4 and EN 60068-2-6 |
| Shock resistance | Shock test with severity level 2 in accordance with FN 942017-5 and EN 60068-2-27 |
| Corrosion resistance classification CRC | 0 - No corrosion stress |
| PWIS conformity | VDMA24364-B1/B2-L |
| Max. magnetic interference field | 60 mT |
| Medium temperature | -5 ... 50 °C |
| Sound pressure level | 85 dB(A) |
| Protection against direct and indirect contact | Protective extra-low voltage with safe disconnection (PELV) Protected to EN 60950/IEC 950 |
| Pilot medium | Compressed air in accordance with ISO8573-1:2010 [7:4:4] |
| Ambient temperature | -5 ... 50 °C |
| Nominal altitude of use | 1000 m in accordance with VDE 0580 |
| Product weight | 1,134 g |
| Operating voltage range, DC sensor | 10 ... 30 V |
| Short-circuit strength sensor | Pulsing |
| Idle current sensor | ≤ 10 mA |
| Max. output current sensor | 200 mA |
| Max. switching frequency sensor | 5,000 Hz |
| Residual ripple sensor | ± 10 % |
| Voltage drop sensor | ≤ 2 V |
| Electrical connection | Plug pattern type C to EN 175301-803 to EN 175301-803 Without mains earth |
| Sensor connection | Plug 3-pin M8x1 |
| Mounting type | with through hole |
| Pneumatic connection, port 1 | G1/4 |
| Pneumatic connection, port 2 | G1/4 |
| Pneumatic connection, port 3 | G1/4 |
| Materials note | Conforms to RoHS |
| Material seals | FPM HNBR NBR |
| Material housing | Aluminium die cast PA |
| Material screws | Galvanised steel |
| Switching element function | Normally closed contact |