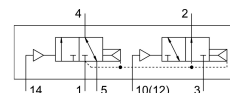


# Pneumatic valve VUWG-L14-T32H-A-G18

Part number: 573831

FESTO



## Data sheet

| Feature                            | Value  |
|------------------------------------|--|
| Valve function                     | 2x3/2-way, open/closed, monostable   |
| Type of actuation                  | Pneumatic  |
| Valve size                         | 14 mm  |
| Standard nominal flow rate         | 650 l/min  |
| pneumatic working port             | G1/8   |
| Operating pressure                 | 1.5 bar...10 bar   |
| Design                             | Piston gate valve  |
| Type of reset                      | Pneumatic spring   |
| Grid dimension                     | 16 mm  |
| Exhaust-air function               | With flow control option   |
| Sealing principle                  | Soft   |
| Mounting position                  | optional   |
| Manual override                    | None   |
| Type of piloting                   | Direct   |
| Flow direction                     | Reversible with restrictions   |
| lap                                | Positive overlap   |
| Pilot pressure                     | 1.5 bar...10 bar   |
| Suitability for vacuum             | no   |
| Switching time off                 | 19 ms  |
| Switching time on                  | 6 ms   |
| Operating medium                   | Compressed air to ISO 8573-1:2010 [7:4:4]  |
| Note on operating and pilot medium | Lubricated operation possible (in which case lubricated operation will always be required) |
| Corrosion resistance class CRC     | 2 - Moderate corrosion stress  |
| LABS (PWIS) conformity             | VDMA24364-B1/B2-L  |
| Media temperature                  | -5 °C...50 °C  |
| Pilot medium                       | Compressed air to ISO 8573-1:2010 [7:4:4]  |
| Ambient temperature                | -5 °C...60 °C  |
| Product weight                     | 81 g   |
| Type of mounting                   | Either:<br>On PR rail<br>With through-hole   |

| <b>Feature</b>               | <b>Value</b>          |
|------------------------------|-----------------------|
| Pilot air port 12            | M5                    |
| Pilot air port 14            | M5                    |
| Pneumatic connection, port 1 | G1/8                  |
| Pneumatic connection, port 2 | G1/8                  |
| Pneumatic connection, port 3 | G1/8                  |
| Pneumatic connection, port 4 | G1/8                  |
| Pneumatic connection, port 5 | G1/8                  |
| Note on materials            | RoHS-compliant        |
| Material seals               | HNBR<br>NBR           |
| Material housing             | Aluminium<br>Anodised |