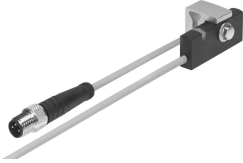


# Proximity sensor SMT-C1-PS-24V-K-0,3-M8D

Part number: 571342

FESTO



## Data sheet

| Feature                                    | Value  |
|--|--|
| Design                                     | Block design   |
| Based on standard                          | EN 60947-5-2   |
| Approval                                   | RCM trademark  |
| CE mark (see declaration of conformity)    | To EU EMC Directive<br>In accordance with EU RoHS Directive                |
| CE marking (see declaration of conformity) | To UK instructions for EMC<br>To UK RoHS instructions                      |
| Note on materials                          | RoHS-compliant<br>Free of halogen  |
| Instructions on use                        | Support / actuator-sensor overview " "The right sensor for the actuator" " |
| Measured variable                          | Position   |
| Measuring principle                        | Magneto-inductive  |
| Ambient temperature                        | -20 °C...70 °C   |
| Switching output                           | PNP  |
| Switching element function                 | N/O contact  |
| Hysteresis                                 | 2 mm   |
| Switch-on time                             | 0.5 ms   |
| Switch-off time                            | 0.5 ms   |
| Max. output current                        | 200 mA   |
| Max. switching capacity DC                 | 6 W  |
| Voltage drop                               | 1.8 V  |
| Inductive protective circuit               | Adapted to MZ, MY, ME coils  |
| Min. load current                          | 0 mA   |
| Off-state current                          | 0.1 mA   |
| Short circuit current rating               | Pulsed   |
| Overload protection                        | Available  |
| Rated operational voltage DC               | 24 V   |
| Operational voltage range DC               | 10 V...30 V  |
| Residual ripple                            | 10 %   |
| Reverse polarity protection                | For all electrical connections   |
| Electrical connection 1, connection type   | Cable with plug  |

| Feature  | Value   |
|--|---|
| Electrical connection 1, connector system            | M8x1, A-coded, to EN 61076-2-104  |
| Electrical connection 1, number of connections/cores | 3   |
| Electrical connection 1, type of mounting            | Screw-type lock   |
| Connection outlet orientation                        | In-line   |
| Material electrical contact                          | Gold-plated brass   |
| Cable length   | 0.3 m   |
| Cable sheath colour                                  | grey  |
| Material cable sheath                                | TPE-O   |
| Type of mounting                                     | Clamped   |
| Tightening torque                                    | 1.2 Nm  |
| Mounting position                                    | optional  |
| Product weight                                       | 24.4 g  |
| Housing colour                                       | Black   |
| Material housing                                     | Wrought aluminium alloy<br>Brass, nickel-plated<br>PP<br>TPE-O<br>TPE-U(PU)<br>High-alloy stainless steel |
| Switching status indication                          | Yellow LED  |
| Ambient temperature with moving cable                | -20 °C...70 °C  |
| Degree of protection                                 | IP65<br>IP68<br>To IEC 60529  |
| LABS (PWIS) conformity                               | VDMA24364-B2-L  |
| Suitable for use with food                           | See supplementary material information  |