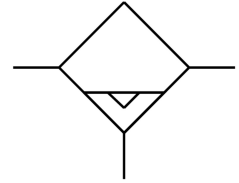


Water separator MS12-LWS

Part number: 569827

FESTO



Data sheet

Feature	Value
Size	12
Series	MS
Mounting position	Vertical +/-5°
Condensate drain	Fully automatic Fully automatic, electrically actuated
Design	Centrifugal separator
Max. condensate volume	400 ml
Bowl guard	Integrated as metal bowl
Degree of condensate separation	99 %
Operating pressure	1 bar...16 bar
Max. standard flow rate	40000 l/min
Standard nominal flow rate	25000 l/min
Operating medium	Compressed air to ISO 8573-1:2010 [-:-:-] Compressed air to ISO 8573-1:2010 [7:-:-]
Corrosion resistance class CRC	2 - Moderate corrosion stress
LABS (PWIS) conformity	VDMA24364-B1/B2-L
Storage temperature	1 °C...60 °C
Air purity class at output	Compressed air to ISO 8573-1:2010 [-:7:4]
Media temperature	1 °C...60 °C
Ambient temperature	1 °C...60 °C
Type of mounting	Either: In-line installation Via mounting bracket With accessories
Material covering	PA-reinforced
Material spin disc	POM
Material sub-base	Die-cast aluminium
Material mounting bracket	Die-cast aluminium
Material housing	Die-cast aluminium
Material module connector	Die-cast aluminium
Material bowl	Wrought aluminium alloy
Material cup seal	NBR

Feature	Value
Material screen	PA
Material separating plate	POM