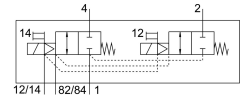
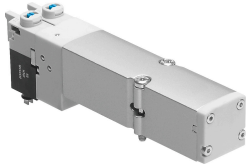


# Solenoid valve VMPA2-M1H-DS-PI

Part number: 568657

FESTO



## Data sheet

Feature	Value
Valve function	2x2/2-way, monostable, closed
Type of actuation	Electric
Valve size	20 mm
Standard nominal flow rate	650 l/min...820 l/min
Operating voltage	24V DC
Operating pressure	-0.09 MPa...0.8 MPa -0.9 bar...8 bar
Design	Piston gate valve
Type of reset	Mechanical spring
Approval	c UL us - Recognized (OL)
Degree of protection	IP65 To IEC 60529
Sealing principle	Soft
Mounting position	optional
Manual override	Detenting Non-detenting
Type of piloting	Pilot actuated
Flow direction	Reversible
lap	Positive overlap
Signal status display	yes
Pilot pressure	0.3 MPa...0.8 MPa 3 bar...8 bar
Suitability for vacuum	yes
Note on standard nominal flow rate	MPA-L: 820 l/min MPA-S: 650 l/min
Standard nominal flow rate with QS-8	650 l/min
Standard nominal flow rate with QS-10	820 l/min
Switching time off	25 ms
Switching time on	12 ms
Max. positive test pulse with 0 signal	400 µs
Max. negative test pulse with 1 signal	900 µs
Permissible voltage fluctuations	+/- 25%
Operating medium	Compressed air to ISO 8573-1:2010 [7:4:4]

<b>Feature</b>	<b>Value</b>
Note on operating and pilot medium	Lubricated operation possible (in which case lubricated operation will always be required)
Vibration resistance	Transport application test with severity level 2 to FN 942017-4 and EN 60068-2-6
Shock resistance	Shock test with severity level 2 to FN 942017-5 and EN 60068-2-27
Corrosion resistance class CRC	1 - Low corrosion stress
LABS (PWIS) conformity	VDMA24364-B1/B2-L
Storage temperature	-20 °C...40 °C
Media temperature	-5 °C...50 °C
Relative air humidity	Max. 90% at 40°C
Ambient temperature	-5 °C...50 °C
Max. tightening torque for valve mounting	0.65 Nm
Product weight	100 g
Type of mounting	With through-hole
Note on materials	RoHS-compliant
Material seals	NBR
Material housing	Die-cast aluminium