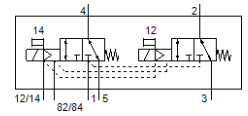


# solenoid valve

## VMPA2-M1H-KS-PI

Part number: 568656

FESTO



## Data sheet

| Feature                                   | Value  |
|---|--|
| Valve function                            | 2x3/2 closed, monostable   |
| Type of actuation                         | electrical   |
| Valve size                                | 20 mm  |
| Standard nominal flow rate                | 480 ... 500 l/min  |
| Operating pressure MPa                    | -0.09 ... 0.8 MPa  |
| Operating pressure                        | -0.9 ... 8 bar   |
| Design structure                          | Piston slide   |
| Type of reset                             | mechanical spring  |
| Authorisation                             | c UL us - Recognized (OL)  |
| Protection class                          | IP65<br>to IEC 60529   |
| Sealing principle                         | soft   |
| Assembly position                         | Any  |
| Manual override                           | detenting<br>Pushing   |
| Type of piloting                          | Piloted  |
| Flow direction                            | reversible   |
| Overlap                                   | Positive overlap   |
| Signal status display                     | Yes  |
| Pilot pressure MPa                        | 0.3 ... 0.8 MPa  |
| Pilot pressure                            | 3 ... 8 bar  |
| Suitability for vacuum                    | Yes  |
| Information on standard nominal flow rate | MPA-L: 480 l/min<br>MPA-S: 500 l/min   |
| Standard nominal flow rate with QS-8      | 500 l/min  |
| Standard nominal flow with QS-10          | 480 l/min  |
| Switching time off                        | 25 ms  |
| Switching time on                         | 12 ms  |
| Max. positive test pulse with logic 0     | 400 µs   |
| Max. negative test pulse with logic 1     | 900 µs   |
| Permissible voltage fluctuation           | +/- 25 %   |
| Operating medium                          | Compressed air in accordance with ISO8573-1:2010 [7:4:4]                                       |
| Note on operating and pilot medium        | Lubricated operation possible (subsequently required for further operation)                    |
| Vibration resistance                      | Transport application test at severity level 2 in accordance with FN 942017-4 and EN 60068-2-6 |
| Shock resistance                          | Shock test with severity level 2 in accordance with FN 942017-5 and EN 60068-2-27              |
| Corrosion resistance classification CRC   | 1 - Low corrosion stress   |
| PWIS conformity                           | VDMA24364-B1/B2-L  |
| Storage temperature                       | -20 ... 40 °C  |
| Medium temperature                        | -5 ... 50 °C   |
| Relative air humidity                     | Max. 90% at 40°C   |
| Ambient temperature                       | -5 ... 50 °C   |
| Max. tightening torque, valve mounting    | 0.65 Nm  |
| Product weight                            | 100 g  |
| Mounting type                             | with through hole  |
| Materials note                            | Conforms to RoHS   |
| Material seals                            | NBR  |
| Material housing                          | Aluminium die cast   |