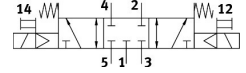
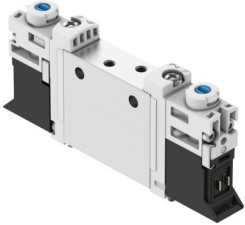


Solenoid valve

VUVG-L10A-P53C-T-M3-1P3

Part number: 566439

FESTO



Data sheet

Feature	Value
Valve function	5/3 closed
Type of actuation	Electric
Valve size	10 mm
Standard nominal flow rate (standardised to DIN 1343)	90 l/min...90 l/min
pneumatic working port	M3
Operating voltage	24V DC
Operating pressure	0.3 MPa...0.3 MPa 3 bar...3 bar
Design	Piston gate valve
Type of reset	Mechanical spring
Approval	RCM trademark c UL us - Recognized (OL)
Degree of protection	IP40 IP65 With plug socket
Nominal size	2 mm...2 mm
Exhaust-air function	With flow control option
Sealing principle	Soft
Mounting position	optional
Manual override	Detenting Non-detenting Covered
Type of piloting	Pilot actuated
Pilot air supply	Internal
lap	Overlap
Pilot pressure	0.3 MPa...0.3 MPa 3 bar...3 bar
Suitability for vacuum	no
Switching time off	25 ms...25 ms
Switching time on	8 ms...8 ms
Switching time reversal	14 ms...14 ms
Duty cycle	100%
Max. positive test pulse with 0 signal	700 µs...700 µs

Feature	Value
Max. negative test pulse with 1 signal	900 µs...900 µs
Characteristic coil data	24 V DC: 1.0 W 24 V DC: low-current phase 0.3 W, high-current phase 1.0 W
Permissible voltage fluctuations	+/- 10 %
Operating medium	Compressed air to ISO 8573-1:2010 [7:4:4]
Note on operating and pilot medium	Lubricated operation possible (in which case lubricated operation will always be required)
Vibration resistance	Transport application test with severity level 2 to FN 942017-4 and EN 60068-2-6
Restrictions for environmental and media temperature	-5 ... 50° C Without holding current reduction
Shock resistance	Shock test with severity level 2 to FN 942017-5 and EN 60068-2-27
Corrosion resistance class CRC	2 - Moderate corrosion stress
LABS (PWIS) conformity	VDMA24364-B1/B2-L
Cleanroom class	Class 5 according to ISO 14644-1
Media temperature	-5 °C...-5 °C
Ambient temperature	-5 °C...-5 °C
Product weight	49 g...49 g
Electrical connection	Via electrical sub-base
Type of mounting	On manifold rail With through-hole Either:
Pneumatic connection, port 1	M3
Pneumatic connection, port 2	M3
Pneumatic connection, port 3	M3
Pneumatic connection, port 4	M3
Pneumatic connection, port 5	M3
Note on materials	RoHS-compliant
Material seals	HNBR NBR
Material housing	Wrought aluminium alloy