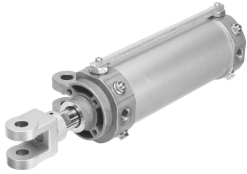


# Hinge cylinder DWB-63-75-Y-A-G

Part number: 565757

FESTO



## Data sheet

| Feature  | Value  |
|--|--|
| Stroke   | 75 mm  |
| Piston diameter  | 63 mm  |
| Piston rod thread  | M16x1.5  |
| Broad rod clevis/swivel mounting                             | 19.5 mm  |
| Cushioning   | Pneumatic cushioning, adjustable at both ends  |
| Mounting position  | optional   |
| Design   | Piston<br>Piston rod with rod clevis<br>Swivel mounting on bearing cap<br>Cylinder barrel  |
| Speed regulation   | Integrated flow control at both ends   |
| Position detection   | Via proximity switch   |
| Piston-rod end   | Male thread with rod clevis  |
| Operating pressure   | 1 bar...10 bar   |
| Mode of operation  | Double-acting  |
| Operating medium   | Compressed air to ISO 8573-1:2010 [7:4:4]  |
| Note on operating and pilot medium                           | Lubricated operation possible (in which case lubricated operation will always be required) |
| Corrosion resistance class CRC                               | 0 - No corrosion stress  |
| LABS (PWIS) conformity                                       | VDMA24364-B2-L   |
| Ambient temperature  | -10 °C...60 °C   |
| Impact energy in end positions                               | 1.3 J  |
| Cushioning length  | 20 mm  |
| Theoretical force at 0.6 MPa (6 bar, 87 psi), return stroke  | 1682 N   |
| Theoretical force at 0.6 MPa (6 bar, 87 psi), advance stroke | 1870 N   |
| Moving mass for 0 mm stroke                                  | 741 g  |
| Additional moving mass per 10 mm stroke                      | 25 g   |
| Basic weight for 0 mm stroke                                 | 1600 g   |
| Additional weight per 10 mm stroke                           | 42 g   |
| alternative connections                                      | See product drawing  |
| Type of mounting   | Via swivel mounting on bearing cap<br>With accessories                                     |
| Pneumatic connection   | G1/4   |

| <b>Feature</b>           | <b>Value</b>                         |
|--------------------------|--------------------------------------|
| Material rod clevis      | Cast steel<br>Tempered steel         |
| Note on materials        | RoHS-compliant                       |
| Material wiper           | Bronze                               |
| Material cover           | Die-cast aluminium<br>Anodised       |
| Material seals           | NBR                                  |
| Material piston rod      | Tempered steel<br>Hard-chrome-plated |
| Material cylinder barrel | Wrought aluminium alloy<br>Anodised  |