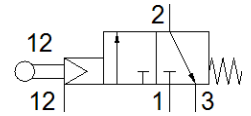
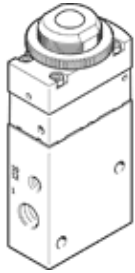


# ball actuated valve VMEM-BTCZ-M32C-M-G18

Part number: 563773

FESTO

This type is suitable for vacuum.



## Data sheet

Feature	Value
Valve function	3/2 closed, monostable
Type of actuation	mechanical
Width	20 mm
Standard nominal flow rate	500 l/min
Operating pressure	-0.95 ... 8 bar
Design structure	Poppet seat
Type of reset	mechanical spring
Nominal size	4 mm
Instructions for use	Do not use as mechanical stop
Type of piloting	Piloted
Pilot air supply	external
Pilot pressure	3.5 ... 8 bar
Max. actuating speed for axial actuation	0.6 m/s
Max. actuating speed for side actuation	0.2 m/s
Max. switching frequency	3 Hz
Operating medium	Compressed air in accordance with ISO8573-1:2010 [7:::]
Note on operating and pilot medium	Lubricated operation possible (subsequently required for further operation)
Corrosion resistance classification CRC	2 - Moderate corrosion stress
Medium temperature	-10 ... 60 °C
Ambient temperature	-10 ... 60 °C
Actuating force	44 N
Max. force on actuator	80 N
Max. transverse force on actuator	30 N
Product weight	148 g
Mounting type	Optional Front panel installation with through hole
Pneumatic connection, port 1	G1/8
Pneumatic connection, port 2	G1/8
Pneumatic connection, port 3	G1/8
Materials note	Conforms to RoHS
Materials information for cover	Wrought Aluminium alloy Anodised
Materials information for seals	NBR
Materials information, housing	Wrought Aluminium alloy Anodised