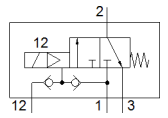
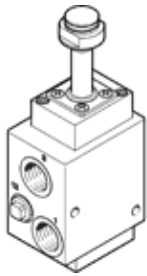


basic valve

VOFC-L-M32C-MC-G12-F9-A

Part number: 562866

FESTO



Data sheet

| Feature | Value |
|---|---|
| Valve function | 3/2 closed, monostable |
| Type of actuation | electrical |
| Width | 51 mm |
| Standard nominal flow rate | 3,000 l/min |
| Operating pressure | 2 ... 8 bar |
| Design structure | Pilot-actuated piston poppet valve |
| Type of reset | mechanical spring |
| Protection class | IP65 |
| Nominal size | 12 mm |
| Sealing principle | soft |
| Assembly position | Any |
| Manual override | None |
| Type of piloting | Piloted |
| Pilot air supply | external Internal |
| Flow direction | non reversible |
| Safety Integrity Level (SIL) | up to SIL4 High Demand mode up to SIL4 Low Demand mode |
| Note on operating pressure | 0 - 8 bar with external pilot air |
| Flow rate Kv ventilation | 3.8 m3/h |
| Flow rate Kv exhaust | 3.8 m3/h |
| Switching time off | 14 ms |
| Switching time on | 25 ms |
| Duty cycle | 100% |
| Operating medium | Compressed air in accordance with ISO8573-1:2010 [-:-:-] |
| Corrosion resistance classification CRC | 4 |
| Medium temperature | -25 ... 60 °C |
| Ambient temperature | -25 ... 60 °C |
| Product weight | 880 g |
| Pneumatic connection, port 1 | G1/2 |
| Pneumatic connection, port 2 | G1/2 |
| Pneumatic connection, port 3 | G1/2 |
| Materials note | Contains PWIS substances Conforms to RoHS |
| Materials information for seals | NBR |
| Materials information, housing | Aluminium Hard Ematal plated |