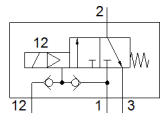
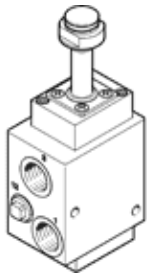


# basic valve VOFC-L-M32C-MC-G12-F9

Part number: 562865

FESTO



## Data sheet

Feature	Value
Valve function	3/2 closed, monostable
Type of actuation	electrical
Width	51 mm
Standard nominal flow rate	3,000 l/min
Operating pressure	2 ... 8 bar
Design structure	Pilot-actuated piston poppet valve
Type of reset	mechanical spring
Protection class	IP65
Nominal size	12 mm
Sealing principle	soft
Assembly position	Any
Manual override	None
Type of piloting	Piloted
Pilot air supply	external Internal
Flow direction	non reversible
Safety Integrity Level (SIL)	up to SIL4 High Demand mode up to SIL4 Low Demand mode
Note on operating pressure	0 - 8 bar with external pilot air
Flow rate Kv ventilation	3.8 m3/h
Flow rate Kv exhaust	3.8 m3/h
Switching time off	14 ms
Switching time on	25 ms
Duty cycle	100%
Operating medium	Compressed air in accordance with ISO8573-1:2010 [-:-:-]
Corrosion resistance classification CRC	4
Medium temperature	-25 ... 60 °C
Ambient temperature	-25 ... 60 °C
Product weight	880 g
Pneumatic connection, port 1	G1/2
Pneumatic connection, port 2	G1/2
Pneumatic connection, port 3	G1/2
Materials note	Contains PWIS substances Conforms to RoHS
Materials information for seals	NBR
Materials information, housing	Aluminium Hard Ematal plated