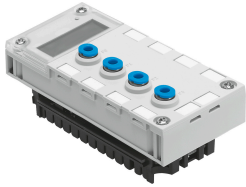


# Analogue module CPX-4AE-P-B2

Part number: 560361

FESTO



## Data sheet

Feature	Value
Dimensions (W x L x H)	(incl. interlinking block) 50 x 107 x 55 mm
Product weight	115 g
Operating medium	Compressed air to ISO 8573-1:2010 [7:4:4]
Note on operating and pilot medium	Lubricated operation possible (in which case lubricated operation will always be required)
Media temperature	0 °C...50 °C
Ambient temperature	-5 °C...50 °C
Storage temperature	-20 °C...70 °C
Degree of protection	IP65 IP67
Corrosion resistance class CRC	1 - Low corrosion stress (when installed)
LABS (PWIS) conformity	VDMA24364-B2-L
Note on materials	RoHS-compliant
Material housing	PA-reinforced PC
Pneumatic connection	QS-4
LED display	1 Group diagnostics
Diagnosis	Limit value violation per channel Parameterisation error Sensor limit per channel
Parameterisation	Diagnostic delay per channel Hysteresis per module Unit of measurement Measured value smoothing per channel Diagnostics limit monitoring per channel Diagnostics: sensor limit per channel Relative/differential pressure measurement
Internal cycle time	5 ms
Operational voltage range DC	18 V...30 V
Nominal operating voltage DC	24 V
Intern power consumption nominal operating voltage	Typ. 50 mA
Number of inputs	4
Measured variable	4x relative pressure/2x differential pressure

Feature	Value
Displayable units	kPa mbar psi
Data format	15 bits + prefix Binary notation in mbar, kPa, psi
End value for pressure measuring range	1 bar
Start value for pressure measuring range	-1 bar