

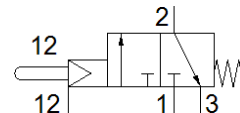
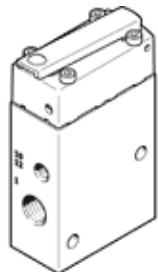
# stem actuated valve VMEM-STCZ-M32C-M-G18

Part number: 555622  
Product to be discontinued

FESTO

This type is suitable for vacuum.

Type to be discontinued. Available until 2019. See Support Portal for alternative products.



## Data sheet

Feature	Value
Valve function	3/2 closed, monostable
Type of actuation	mechanical
Width	20 mm
Standard nominal flow rate	500 l/min
Operating pressure	-0.95 ... 8 bar
Design structure	Poppet seat
Type of reset	mechanical spring
Nominal size	4 mm
Instructions for use	Do not use as mechanical stop
Type of piloting	Piloted
Pilot air supply	external
Pilot pressure	3.5 ... 8 bar
Max. switching frequency	3 Hz
Operating medium	Compressed air in accordance with ISO8573-1:2010 [7:::]
Note on operating and pilot medium	Lubricated operation possible (subsequently required for further operation)
Corrosion resistance classification CRC	2 - Moderate corrosion stress
Medium temperature	-10 ... 60 °C
Ambient temperature	-10 ... 60 °C
Actuating force	15.5 N
Max. force on actuator	80 N
Product weight	152 g
Mounting type	with through hole
Pneumatic connection, port 1	G1/8
Pneumatic connection, port 2	G1/8
Pneumatic connection, port 3	G1/8
Materials note	Conforms to RoHS
Material cover	POM
Material seals	NBR
Material housing	Wrought Aluminium alloy Anodised