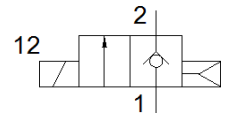
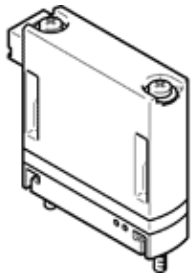


solenoid valve

MHJ9-HF

Part number: 553117

FESTO



Data sheet

Feature	Value
Valve function	2/2 closed, monostable
Type of actuation	electrical
Width	9 mm
Standard nominal flow rate	160 l/min
Operating pressure MPa	0.05 ... 0.6 MPa
Operating pressure	0.5 ... 6 bar
Design structure	Poppet valve without spring return
Type of reset	Air spring
Protection class	IP40
Grid dimension	9.5 mm
Operating conditions to DIN VDE 0580	S3 50% 20 min. with individual valve S3 15% 20 min. with block mounting
Note on operation	Do not operate without flow
Sealing principle	Hard
Assembly position	Any
Manual override	None
Type of piloting	direct
Flow direction	non reversible
b value	0.36
C value	0.66 l/sbar
Maximum switching frequency	500 Hz
Switching time on at 0.4 MPa (4 bar, 58 psi) and 24 V in new condition	1 ms
Switching time off at 0.4 MPa (4 bar, 58 psi) and 24 V in new condition	0.5 ms
Switching time on at 0.4 MPa (4 bar, 58 psi) and 48 V in new condition	0.8 ms
Switching time off at 0.4 MPa (4 bar, 58 psi) and 48 V in new condition	0.4 ms
Switching time on at 0.4 MPa (4 bar, 58 psi) and 12 V in new condition	1.4 ms
Switching time off at 0.4 MPa (4 bar, 58 psi) and 12 V in new condition	0.6 ms
Switching time on at 0.05 MPa (0.5 bar, 7.25 psi) and 24 V in new condition	0.9 ms
Switching time off at 0.05 MPa (0.5 bar, 7.25 psi) and 24 V in new condition	0.7 ms
Switching time on at 0.6 MPa (6 bar, 87 psi) and 24 V in new condition	1.3 ms
Switching time off at 0.6 MPa (6 bar, 87 psi) and 24 V in new condition	0.5 ms
Tolerance for Switching time OFF	+15 %/-25 %
Tolerance for Switching time ON	+/-15 %
Operating voltage range DC	12 ... 53 V
Note regarding operating voltage	Only with cable MHJ9-KMH...
Coil resistance	5 Ohm
Operating medium	Compressed air in accordance with ISO8573-1:2010 [7:4:4]
Note on operating and pilot medium	Lubricated operation not possible
Restriction ambient and medium temperature	related to switching frequency
Corrosion resistance classification CRC	2 - Moderate corrosion stress
PWIS conformity	VDMA24364-B2-L
Storage temperature	-20 ... 50 °C
Max. permissible solenoid surface temperature	120 °C
Medium temperature	-5 ... 60 °C
Ambient temperature	-5 ... 60 °C
Max. tightening torque, valve mounting	0.28 Nm

Feature	Value
Product weight	25 g
Electrical connection	2-pin Plug KMH
Mounting type	On sub-base
Pneumatic connection, port 1	Sub-base
Pneumatic connection, port 2	Sub-base
Materials note	Conforms to RoHS
Material seals	HNBR
Material housing	PA-reinforced
Material screws	Steel