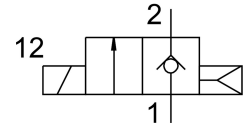


Solenoid valve MHJ9-MF

Part number: 553115

FESTO



Data sheet

Feature	Value
Valve function	2/2-way, closed, monostable
Type of actuation	Electric
Construction width	9 mm
Standard nominal flow rate	100 l/min
pneumatic working port	Sub-base
Operating voltage	24V DC
Operating pressure	0.05 MPa...0.6 MPa 0.5 bar...6 bar
Design	Poppet valve without spring return
Type of reset	Pneumatic spring
Degree of protection	IP40
Grid dimension	9,5 mm
Note on operation	Do not operate without flow. For block mounting with flow, max. ambient temperature 45°C.
Sealing principle	Hard
Mounting position	optional
Manual override	None
Type of piloting	Direct
Flow direction	Non-reversible
b value	0.38
C value	0.4 l/sbar
Max. switching frequency	1000 Hz
Switching time on 0.4 MPa (4 bar, 58 psi) and 24 V in new condition	0.8 ms
Switching time off 0.4 MPa (4 bar, 58 psi) and 24 V in new condition	0.4 ms
Switching time on 0.4 MPa (4 bar, 58 psi) and 48 V in new condition	0.6 ms
Switching time off 0.4 MPa (4 bar, 58 psi) and 48 V in new condition	0.4 ms
Switching time on 0.4 MPa (4 bar, 58 psi) and 12 V in new condition	1.1 ms
Switching time off 0.4 MPa (4 bar, 58 psi) and 12 V in new condition	0.4 ms
Switching time on 0.05 MPa (0.5 bar, 7.25 psi) and 24 V in new condition	0.7 ms
Switching time off 0.05 MPa (0.5 bar, 7.25 psi) and 24 V in new condition	0.5 ms
Switching time on 0.6 MPa (6 bar, 87 psi) and 24 V in new condition	0.9 ms
Switching time off 0.6 MPa (6 bar, 87 psi) and 24 V in new condition	0.4 ms

Feature	Value
Tolerance switching time off	+15%/-25%
Tolerance switching time on	+/-15%
Operational voltage range DC	12 V...53 V
Duty cycle	100%
Note regarding operating voltage	Operation only with connecting cable MHJ9-KMH...
Coil resistance R20	2.5 Ohm
Operating medium	Compressed air to ISO 8573-1:2010 [7:4:4]
Note on operating and pilot medium	Lubricated operation not possible
Restrictions for environmental and media temperature	As a function of switching frequency (see graph)
Corrosion resistance class CRC	2 - Moderate corrosion stress
LABS (PWIS) conformity	VDMA24364-B2-L
Storage temperature	-20 °C...50 °C
Permissible solenoid surface temperature	120 °C
Media temperature	-5 °C...60 °C
Ambient temperature	-5 °C...60 °C
Max. tightening torque for valve mounting	0.28 Nm
Product weight	25 g
Electrical connection	2-pin Plug KMH
Type of mounting	On sub-base
Pneumatic connection, port 1	Sub-base
Pneumatic connection, port 2	Sub-base
Note on materials	RoHS-compliant
Material seals	HNBR
Material housing	PA-reinforced
Material screws	Steel