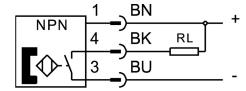
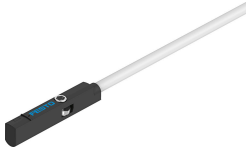


# Proximity sensor SMT-10M-NS-24V-E-0,3-L-M8D

Part number: 551379

FESTO



## Data sheet

Feature	Value
Design	For C-slot
Conforms to standard	EN 60947-5-2
Approval	RCM trademark
CE mark (see declaration of conformity)	To EU EMC Directive In accordance with EU RoHS Directive
CE marking (see declaration of conformity)	To UK instructions for EMC To UK RoHS instructions
Special characteristics	Oil resistant
Note on materials	RoHS-compliant Free of halogen
Instructions on use	<a href="https://www.festo.com/Drive-Sensor-Overview">https://www.festo.com/Drive-Sensor-Overview</a>
Measured variable	Position
Measuring principle	Magneto-resistive
Ambient temperature	-40 °C...70 °C
Repetition accuracy	0.2 mm
Switching output	NPN
Switching element function	N/O contact
Switch-on time	1.3 ms
Switch-off time	4.2 ms...7.3 ms
Max. switching frequency	130 Hz
Max. output current	100 mA
Max. output current using mounting kits	50 mA
Max. switching capacity DC	2.8 W
Max. switching capacity DC using mounting kits	1.5 W
Voltage drop	1.5 V
Short circuit current rating	yes
Overload protection	Available
Rated operational voltage DC	24 V
Operational voltage range DC	5 V...30 V
Reverse polarity protection	For all electrical connections
Electrical connection 1, connection type	Cable with plug
Electrical connection 1, connector system	M8x1, A-coded, to EN 61076-2-104

Feature	Value
Electrical connection 1, number of connections/cores	3
Electrical connection 1, type of mounting	Screw-type lock
Connection outlet orientation	In-line
Test conditions cable	Bending strength: to Festo standard Test conditions on request Torsional resistance: > 300,000 cycles, ± 270°/0.1 m Energy chain: > 5 million cycles, bending radius 28 mm
Cable length	0.3 m
Cable characteristic	Suitable for energy chains/robot applications
Material cable sheath	TPE-U(PUR)
Type of mounting	Screw-clamped Insertable in the slot from above
Max. tightening torque	0.4 Nm
Mounting position	optional
Product weight	6.7 g
Material housing	PA-reinforced High-alloy stainless steel
Switching status indication	Yellow LED
Ambient temperature with moving cable	-20 °C...70 °C
Degree of protection	IP65 IP68
LABS (PWIS) conformity	VDMA24364-B2-L
Suitability for the production of Li-ion batteries	Metals with more than 1% copper, zinc or nickel by mass are excluded from use. Exceptions are nickel in steel, chemically nickel-plated surfaces, printed circuit boards, cables, electrical plug connectors and coils
Cleanroom class	Class 4 according to ISO 14644-1