

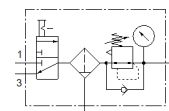
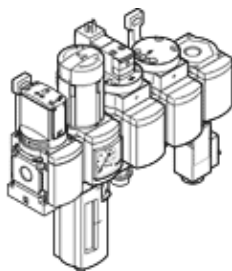
# service unit combination

## MSB4N-1/4:C3J1D7A1F3-WP

Part number: 550483

FESTO

Consisting of on-off valve, filter/regulator, electrical on-off valve, pneumatic soft-start valve, branching module with pressure switch but without display, wall mounting plate Maximum output pressure 9 bar, 40 µm filter, with pressure gauge, lockable regulator head, plastic bowl with plastic basket guard, manual condensate drain, flow direction from left to right.



### Data sheet

Feature	Value
Size	4
Series	MS
Actuator lock	Rotary knob with lock with accessories, lockable
Assembly position	Vertical +/- 5°
Grade of filtration	40 µm
Condensate drain	manual rotary
Design structure	On/off valve Filter regulator with pressure gauge
Controller function	Output pressure constant with initial pressure compensation with secondary exhaust with return flow
Bowl guard	Plastic guard
Pressure gauge	with pressure gauge
Operating pressure	4.5 ... 10 bar
Pressure regulation range	4 ... 9 bar
Standard nominal flow rate	700 l/min
Characteristic coil data	24 V DC: 1.8 W
Operating medium	Compressed air in accordance with ISO8573-1:2010 [7:4:4] Inert gases
Note on operating and pilot medium	Lubricated operation possible (subsequently required for further operation)
Corrosion resistance classification CRC	2 - Moderate corrosion stress
PWIS conformity	VDMA24364-B2-L
Storage temperature	-10 ... 60 °C
Food-safe	See Supplementary material information
Air purity class at output	Compressed air in accordance with ISO8573-1:2010 [7:4:4]
Medium temperature	-10 ... 50 °C
Ambient temperature	-10 ... 50 °C
Product weight	2,200 g
Mounting type	with accessories
Pneumatic connection, port 1	1/4 NPT
Pneumatic connection, port 2	1/4 NPT
Pneumatic connection, port 3	G1/4 1/4 NPT
Material housing	Aluminium die cast
Material bowl	PC