

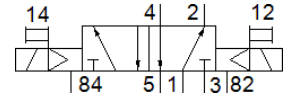
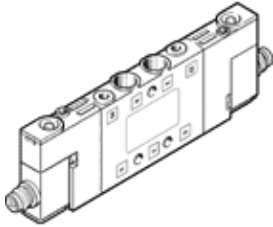
solenoid valve

CPE10-M1CH-5J-M7

Part number: 550225
Classic - do not use for new projects

FESTO

Very compact assembly, with M8 plug connection.
Modern alternatives can be found by entering the first four characters of the type code in the search field.



Data sheet

Feature	Value
Valve function	5/2 bistable
Type of actuation	electrical
Width	10 mm
Standard nominal flow rate	350 l/min
Operating pressure MPa	0.25 ... 0.8 MPa
Operating pressure	2.5 ... 8 bar
Design structure	Piston slide
Maritime classification	see certificate
Protection class	IP65 IP67 with plug socket to IEC 60529
Nominal size	4 mm
Exhaust-air function	throttleable
Sealing principle	soft
Assembly position	Any
Manual override	with accessories, detenting Pushing
Type of piloting	Piloted
Pilot air supply	Internal
Flow direction	non reversible
Valve position identification	Inscription label holder
Overlap	Positive overlap
Switching time reversal	8 ms
Duty cycle	100 %
Max. positive test pulse with logic 0	1,200 µs
Max. negative test pulse with logic 1	900 µs
Characteristic coil data	24 V DC: 1.28 W
Permissible voltage fluctuation	-15 % / +10 %
Operating medium	Compressed air in accordance with ISO8573-1:2010 [7:4:4]
Note on operating and pilot medium	Lubricated operation possible (subsequently required for further operation)
Vibration resistance	Transport application test at severity level 2 in accordance with FN 942017-4 and EN 60068-2-6
Shock resistance	Shock test with severity level 2 in accordance with FN 942017-5 and EN 60068-2-27
Corrosion resistance classification CRC	2 - Moderate corrosion stress
PWIS conformity	VDMA24364-B1/B2-L
Medium temperature	-5 ... 50 °C
Ambient temperature	-5 ... 50 °C
Max.tightening torque plug	0.4 Nm
Product weight	68 g

Feature	Value
Electrical connection	4-pin M8x1
Mounting type	with through hole
Pilot exhaust port 82	M3
Pilot exhaust port 84	M3
Pilot air port 12	M3
Pilot air port 14	M3
Pneumatic connection, port 1	M7
Pneumatic connection, port 2	M7
Pneumatic connection, port 3	M7
Pneumatic connection, port 4	M7
Pneumatic connection, port 5	M7
Materials note	Conforms to RoHS
Material seals	NBR
Material housing	Aluminium die cast