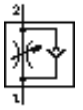
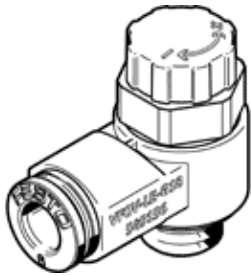


One-way flow control valve VFOV-LE-G18-Q4

Part number: 549155

FESTO



Data sheet

Feature	Value
Valve function	One-way flow control function for exhaust air
Pneumatic connection, port 1	QS-4
Pneumatic connection, port 2	G1/8
Type of actuation	manual
Adjusting element	Rotary knob
Mounting type	Threaded
Standard nominal flow rate in flow control direction	0 ... 260 l/min
Standard nominal flow rate in non-return direction	130 ... 230 l/min
Operating pressure	0.2 ... 10 bar
Ambient temperature	-10 ... 60 °C
Operating medium	Dried compressed air, lubricated or unlubricated
Assembly position	Any
Standard flow rate in direction of flow control: 6 -> 0 bar	0 ... 325 l/min
Standard flow rate in blocked direction: 6 -> 0 bar	300 ... 410 l/min
Storage temperature	-10 ... 40 °C
Medium temperature	-10 ... 60 °C
Max. tightening torque	3 Nm
Product weight	10 g
Materials note	Free of copper and PTFE
Materials information for seals	NBR
Material information, rotary knob	PA-reinforced
Material information, hollow bolt	Wrought Aluminium alloy Anodised
Release ring material data	POM
Swivel joint material data	PA-reinforced