

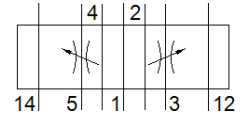
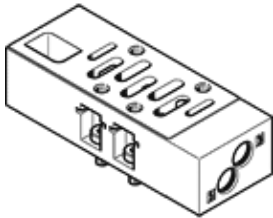
flow control plate

VABF-S1-1-F1B1-C

Part number: 549102

FESTO

For valve terminal VTSA, standard port pattern to 5599-1, 5599-2, for mounting between manifold sub-base and valve, for restricting exhaust air ports 3 and 5 on the valve.



Data sheet

Feature	Value
Width	42 mm
Based on the standard	ISO 5599-1
Assembly position	Any
Pneumatic vertical stacking	Throttle plate, exhaust air flow control
Operating pressure MPa	-0.09 ... 1 MPa
Operating pressure	-0.9 ... 10 bar
Standard nominal flow rate	1,100 l/min
Operating medium	Compressed air in accordance with ISO8573-1:2010 [7:4:4]
Note on operating and pilot medium	Lubricated operation possible (subsequently required for further operation)
Corrosion resistance classification CRC	0 - No corrosion stress
PWIS conformity	VDMA24364-B1/B2-L
Protection class	IP65 NEMA 4
Ambient temperature	-5 ... 50 °C
Product weight	220 g
Vertical stacking type of mounting	on manifold block on individual sub-base
Materials note	Conforms to RoHS
Material housing	Aluminium die cast