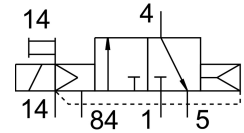
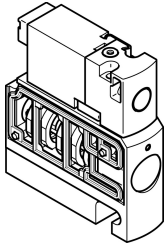


Solenoid valve CPVSC1-M5H-K-H-M5C

Part number: 547380

FESTO



Data sheet

Feature	Value
Valve function	3/2-way, closed, monostable
Type of actuation	Electric
Valve size	10 mm
Standard nominal flow rate	170 l/min
pneumatic working port	M5
Operating voltage	12V DC
Operating pressure	-0.09 MPa...0.7 MPa -0.9 bar...7 bar
Design	Piston gate valve
Type of reset	Pneumatic spring
Approval	c UL us - Recognized (OL)
Degree of protection	IP40
Exhaust-air function	Without flow control option
Sealing principle	Soft
Mounting position	optional
Manual override	Non-detenting
Type of piloting	Pilot actuated
Pilot air supply	External
Flow direction	Non-reversible
lap	Positive overlap
Pilot pressure	0.3 MPa...0.7 MPa 3 bar...7 bar
Switching time off	10 ms
Switching time on	10 ms
Max. positive test pulse with 0 signal	500 µs
Max. negative test pulse with 1 signal	400 µs
Characteristic coil data	12 V DC: 1.0 W
Operating medium	Compressed air to ISO 8573-1:2010 [7:4:4]
Note on operating and pilot medium	Lubricated operation possible (in which case lubricated operation will always be required)
Vibration resistance	Transport application test with severity level 2 to FN 942017-4 and EN 60068-2-6

Feature	Value
Shock resistance	Shock test with severity level 2 to FN 942017-5 and EN 60068-2-27
Corrosion resistance class CRC	1 - Low corrosion stress
LABS (PWIS) conformity	VDMA24364-B2-L
Media temperature	-5 °C...50 °C
Ambient temperature	-5 °C...50 °C
Product weight	30.5 g
Electrical connection	2-pin Plugs
Type of mounting	With through-hole
Pilot exhaust port 82/84	Common line
Pneumatic connection, port 1	Common line
Pneumatic connection, port 2	M5
Pneumatic connection 3/5 combined	Common line
Pneumatic connection, port 4	M5
Note on materials	RoHS-compliant
Material seals	NBR
Material housing	Die-cast aluminium