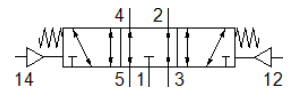
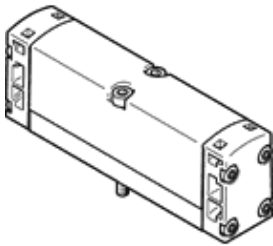


# pneumatic valve VSPA-B-P53E-A2

Part number: 546729

FESTO

Width 18 mm



## Data sheet

| Feature                                   | Value                                                                       |
|-------------------------------------------|-----------------------------------------------------------------------------|
| Valve function                            | 5/3 exhausted                                                               |
| Type of actuation                         | pneumatic                                                                   |
| Width                                     | 18 mm                                                                       |
| Standard nominal flow rate                | 450 l/min                                                                   |
| Operating pressure                        | -0.9 ... 10 bar                                                             |
| Design structure                          | Piston slide                                                                |
| Type of reset                             | mechanical spring                                                           |
| Nominal size                              | 5 mm                                                                        |
| Exhaust-air function                      | throttleable                                                                |
| Sealing principle                         | soft                                                                        |
| Assembly position                         | Any                                                                         |
| Conforms to standard                      | ISO 15407-1<br>VDMA 24563                                                   |
| Type of piloting                          | direct                                                                      |
| Flow direction                            | reversible                                                                  |
| Overlap                                   | Positive overlap                                                            |
| Pilot pressure                            | 3 ... 10 bar                                                                |
| Flow rate of valve                        | 650 l/min                                                                   |
| Flow rate of valve on individual sub-base | 500 l/min                                                                   |
| Flow rate of pneumatically linked valve   | 450 l/min                                                                   |
| Switching time off                        | 18 ms                                                                       |
| Switching time on                         | 9 ms                                                                        |
| Operating medium                          | Compressed air in accordance with ISO8573-1:2010 [7:4:4]                    |
| Note on operating and pilot medium        | Lubricated operation possible (subsequently required for further operation) |
| Corrosion resistance classification CRC   | 0 - No corrosion stress                                                     |
| PWIS conformity                           | VDMA24364-B1/B2-L                                                           |
| Medium temperature                        | -10 ... 60 °C                                                               |
| Relative air humidity                     | 0 - 90 %                                                                    |
| Pilot medium                              | Compressed air in accordance with ISO8573-1:2010 [7:4:4]                    |
| Ambient temperature                       | -10 ... 60 °C                                                               |
| Max. tightening torque, valve mounting    | 0.9 ... 1.1 Nm                                                              |
| Product weight                            | 80 g                                                                        |
| Pilot air port 12                         | Connection plate size 18 mm, according to ISO 15407-1                       |
| Pilot air port 14                         | Connection plate size 18 mm, according to ISO 15407-1                       |
| Pneumatic connection, port 1              | Connection plate size 18 mm, according to ISO 15407-1                       |
| Pneumatic connection, port 2              | Connection plate size 18 mm, according to ISO 15407-1                       |
| Pneumatic connection, port 3              | Connection plate size 18 mm, according to ISO 15407-1                       |
| Pneumatic connection, port 4              | Connection plate size 18 mm, according to ISO 15407-1                       |
| Pneumatic connection, port 5              | Connection plate size 18 mm, according to ISO 15407-1                       |
| Materials note                            | Conforms to RoHS                                                            |
| Material seals                            | NBR                                                                         |
| Material housing                          | Aluminium die cast                                                          |
| Material screws                           | Steel<br>Galvanised                                                         |