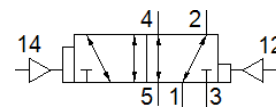


# pneumatic valve VSPA-B-D52-A1

Part number: 546715

FESTO

Width 26 mm



## Data sheet

Feature	Value
Valve function	5/2 bistable-dominant
Type of actuation	pneumatic
Width	26 mm
Standard nominal flow rate	1,100 l/min
Operating pressure	-0.9 ... 16 bar
Design structure	Piston slide
Nominal size	9 mm
Exhaust-air function	throttleable
Sealing principle	soft
Assembly position	Any
Conforms to standard	ISO 15407-1 VDMA 24563
Type of piloting	direct
Flow direction	reversible
Overlap	Positive overlap
Pilot pressure	2 ... 10 bar
Flow rate of valve	1,400 l/min
Flow rate of valve on individual sub-base	1,100 l/min
Flow rate of pneumatically linked valve	1,100 l/min
Switching time reversal	10 ms
Operating medium	Compressed air in accordance with ISO8573-1:2010 [7:4:4]
Note on operating and pilot medium	Lubricated operation possible (subsequently required for further operation)
Corrosion resistance classification CRC	0 - No corrosion stress
PWIS conformity	VDMA24364-B1/B2-L
Medium temperature	-10 ... 60 °C
Relative air humidity	0 - 90 %
Pilot medium	Compressed air in accordance with ISO8573-1:2010 [7:4:4]
Ambient temperature	-10 ... 60 °C
Max. tightening torque, valve mounting	1.8 ... 2.2 Nm
Product weight	180 g
Pilot air port 12	Connection plate size 26 mm, according to ISO 15407-1
Pilot air port 14	Connection plate size 26 mm, according to ISO 15407-1
Pneumatic connection, port 1	Connection plate size 26 mm, according to ISO 15407-1
Pneumatic connection, port 2	Connection plate size 26 mm, according to ISO 15407-1
Pneumatic connection, port 3	Connection plate size 26 mm, according to ISO 15407-1
Pneumatic connection, port 4	Connection plate size 26 mm, according to ISO 15407-1
Pneumatic connection, port 5	Connection plate size 26 mm, according to ISO 15407-1
Materials note	Conforms to RoHS
Material seals	NBR
Material housing	Aluminium die cast
Material screws	Steel Galvanised