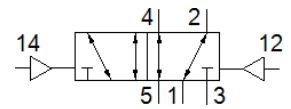
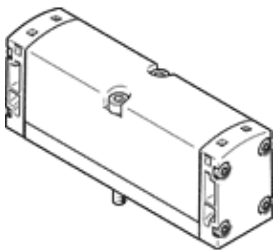


pneumatic valve VSPA-B-B52-A1

Part number: 546714

FESTO

Width 26 mm



Data sheet

| Feature | Value |
|---|---|
| Valve function | 5/2 bistable |
| Type of actuation | pneumatic |
| Width | 26 mm |
| Standard nominal flow rate | 1,100 l/min |
| Operating pressure | -0.9 ... 16 bar |
| Design structure | Piston slide |
| Nominal size | 9 mm |
| Exhaust-air function | throttleable |
| Sealing principle | soft |
| Assembly position | Any |
| Conforms to standard | ISO 15407-1 VDMA 24563 |
| Type of piloting | direct |
| Flow direction | reversible |
| Overlap | Positive overlap |
| Pilot pressure | 2 ... 10 bar |
| Flow rate of valve | 1,400 l/min |
| Flow rate of valve on individual sub-base | 1,100 l/min |
| Flow rate of pneumatically linked valve | 1,100 l/min |
| Switching time reversal | 10 ms |
| Operating medium | Compressed air in accordance with ISO8573-1:2010 [7:4:4] |
| Note on operating and pilot medium | Lubricated operation possible (subsequently required for further operation) |
| Corrosion resistance classification CRC | 0 - No corrosion stress |
| PWIS conformity | VDMA24364-B1/B2-L |
| Medium temperature | -10 ... 60 °C |
| Relative air humidity | 0 - 90 % |
| Pilot medium | Compressed air in accordance with ISO8573-1:2010 [7:4:4] |
| Ambient temperature | -10 ... 60 °C |
| Max. tightening torque, valve mounting | 1.8 ... 2.2 Nm |
| Product weight | 180 g |
| Pilot air port 12 | Connection plate size 26 mm, according to ISO 15407-1 |
| Pilot air port 14 | Connection plate size 26 mm, according to ISO 15407-1 |
| Pneumatic connection, port 1 | Connection plate size 26 mm, according to ISO 15407-1 |
| Pneumatic connection, port 2 | Connection plate size 26 mm, according to ISO 15407-1 |
| Pneumatic connection, port 3 | Connection plate size 26 mm, according to ISO 15407-1 |
| Pneumatic connection, port 4 | Connection plate size 26 mm, according to ISO 15407-1 |
| Pneumatic connection, port 5 | Connection plate size 26 mm, according to ISO 15407-1 |
| Materials note | Conforms to RoHS |
| Material seals | NBR |
| Material housing | Aluminium die cast |
| Material screws | Steel Galvanised |