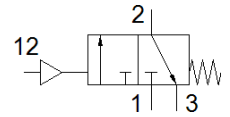


# basic valve LCB-3-1/4-B

Part number: 546057  
Product to be discontinued

FESTO

Type to be discontinued. Available until 2018. See Support Portal for alternative products.



## Data sheet

| Feature                                 | Value   |
|---|---|
| Valve function                          | 3/2 closed, monostable  |
| Type of actuation                       | pneumatic   |
| Width                                   | 50 mm   |
| Standard nominal flow rate              | 600 l/min   |
| Operating pressure                      | 2 ... 10 bar  |
| Design structure                        | Poppet seat   |
| Type of reset                           | mechanical spring   |
| Nominal size                            | 6.5 mm  |
| Assembly position                       | Any   |
| Pilot pressure                          | 0 ... 10 bar  |
| Operating medium                        | Compressed air in accordance with ISO8573-1:2010 [7:4:4]                    |
| Note on operating and pilot medium      | Lubricated operation possible (subsequently required for further operation) |
| Corrosion resistance classification CRC | 2 - Moderate corrosion stress   |
| Medium temperature                      | -10 ... 60 °C   |
| Ambient temperature                     | -10 ... 60 °C   |
| Product weight                          | 500 g   |
| Mounting type                           | with through hole   |
| Pilot air port 12                       | M20x1   |
| Pneumatic connection, port 1            | G1/4  |
| Pneumatic connection, port 2            | G1/4  |
| Pneumatic connection, port 3            | G1/4  |
| Materials information for seals         | NBR   |
| Materials information, housing          | Aluminium<br>Anodised   |