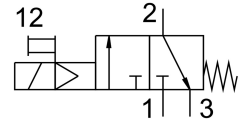
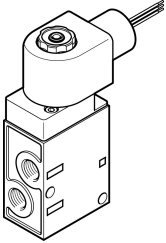


Solenoid valve MFH-3-1/8-24-NPT-EX

Part number: 541650

FESTO



Data sheet

Feature	Value
Valve function	3/2-way, closed, monostable
Type of actuation	Electric
Construction width	70.5 mm
Standard nominal flow rate	500 l/min
pneumatic working port	1/8 NPT
Operating voltage	24V DC
Operating pressure	0.15 MPa...0.8 MPa 1.5 bar...8 bar
Type of reset	Mechanical spring
Explosion protection certification outside the EU	Class I, Div. 1 (US) Class I, Div. 2 (US) Class II, Div. 1 (US) Class II, Div. 2 (US) Class III, Div. 1 (US) Class III, Div. 2 (US) EPL Gb (US) EPL Gc (US)
Certificate issuing authority	FM 3026030
Degree of protection	IP65
Nominal size	5 mm
Exhaust-air function	With flow control option
Sealing principle	Soft
Mounting position	optional
Manual override	Detenting
Type of piloting	Pilot actuated
Flow direction	Non-reversible
lap	Underlap
Switching time off	29 ms
Switching time on	11 ms
Characteristic coil data	24 V DC: 4.6 W

Feature	Value
Explosion protection	Class I, Div. 1 (US) Class I, Div. 2 (US) Class II, Div. 1 (US) Class II, Div. 2 (US) Class III, Div. 1 (US) Class III, Div. 2 (US) Zone 1 (US) Zone 2 (US)
Operating medium	Compressed air to ISO 8573-1:2010 [7:4:4]
Note on operating and pilot medium	Lubricated operation possible (in which case lubricated operation will always be required)
Corrosion resistance class CRC	1 - Low corrosion stress
Media temperature	-5 °C...40 °C
Ambient temperature	-5 °C...40 °C
Product weight	355 g
Type of mounting	With through-hole
Breather connection	Internal
Pilot exhaust port 82	M5
Pneumatic connection, port 1	1/8 NPT
Pneumatic connection, port 2	1/8 NPT
Pneumatic connection, port 3	1/8 NPT
Material seals	NBR PU
Material housing	Die-cast aluminium Anodised