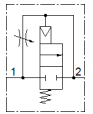
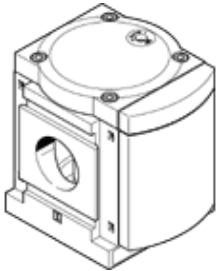


soft-start valve MS12-DL-G

Part number: 541497

FESTO

To slowly pressurise and exhaust pneumatic equipment



Data sheet

| Feature | Value |
|---|---|
| Exhaust-air function | throttleable |
| Type of actuation | pneumatic |
| Assembly position | Any |
| Manual override | None |
| Design structure | Piston seat |
| Type of reset | mechanical spring |
| Type of piloting | direct |
| Pilot air supply | Internal |
| Flow direction | non reversible |
| Valve function | 2/2 |
| Operating pressure | 2 ... 20 bar |
| Standard nominal flow rate | 25,000 ... 42,000 l/min |
| Operating medium | Compressed air in accordance with ISO8573-1:2010 [7:-:] |
| Corrosion resistance classification CRC | 2 - Moderate corrosion stress |
| PWIS conformity | VDMA24364-B1/B2-L |
| Medium temperature | -10 ... 60 °C |
| Ambient temperature | -10 ... 60 °C |
| Product weight | 3,600 g |
| Mounting type | Line installation with accessories Optional |
| Pneumatic connection, port 1 | Manifold module |
| Pneumatic connection, port 2 | Manifold module |
| Material seals | NBR |
| Material housing | Aluminium die cast |