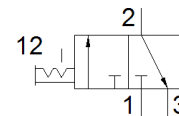


# on-off valve MS6N-EM1-1/2-Z

Part number: 541292

FESTO

Manual, direction of flow: from right to left.



## Data sheet

| Feature                                 | Value   |
|---|---|
| Design structure                        | Rotary slide valve  |
| Type of actuation                       | manual  |
| Exhaust-air function                    | not throttleable  |
| Type of piloting                        | direct  |
| Valve function                          | 3/2 bistable  |
| Operating pressure                      | 0 ... 18 bar  |
| C value                                 | 30.8 l/sbar   |
| b value                                 | 0.57  |
| Standard nominal flow rate              | 8,700 l/min   |
| Operating medium                        | Compressed air in accordance with ISO8573-1:2010 [7:4:4]<br>Inert gases     |
| Note on operating and pilot medium      | Lubricated operation possible (subsequently required for further operation) |
| Corrosion resistance classification CRC | 2 - Moderate corrosion stress   |
| Materials note                          | Conforms to RoHS  |
| PWIS conformity                         | VDMA24364-B1/B2-L   |
| Medium temperature                      | -10 ... 60 °C   |
| Ambient temperature                     | -10 ... 60 °C   |
| Food-safe                               | See Supplementary material information                                      |
| Mounting type                           | Line installation<br>with accessories<br>Optional                           |
| Assembly position                       | Any   |
| Flow direction                          | non reversible  |
| Product weight                          | 580 g   |
| Pneumatic connection, port 1            | 1/2 NPT   |
| Pneumatic connection, port 2            | 1/2 NPT   |
| Pneumatic connection, port 3            | 1/2 NPT   |
| Material seals                          | TPE-U(PU)   |
| Material housing                        | Aluminium die cast  |