

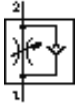
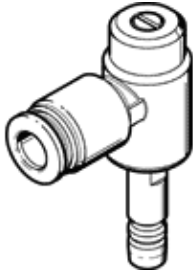
# One-way flow control valve

## VFOC-E-S6-Q6

Part number: 540363

FESTO

With push-in sleeve for adjusting the rotational speed or extending and retracting speed of a cylinder



### Data sheet

Feature	Value
Valve function	One-way flow control function for exhaust air
Pneumatic connection, port 1	QS-6
Pneumatic connection, port 2	Push-in sleeve QS-6
Type of actuation	manual
Adjusting element	Slotted head screw
Mounting type	Plug-in With push-in sleeve
Standard nominal flow rate in flow control direction	0 ... 270 l/min
Standard nominal flow rate in non-return direction	170 ... 260 l/min
Operating pressure	0.2 ... 10 bar
Ambient temperature	-10 ... 60 °C
Operating medium	Dried compressed air, lubricated or unlubricated
Assembly position	Any
Standard flow rate in direction of flow control: 6 -> 0 bar	0 ... 430 l/min
Standard flow rate in blocked direction: 6 -> 0 bar	330 ... 400 l/min
Storage temperature	-10 ... 40 °C
Medium temperature	-10 ... 60 °C
Product weight	21.6 g
Note on pneumatic connection 2	appropriate for Festo QS connections only
Materials note	Free of copper and PTFE
Materials information for seals	NBR
Material information, hollow bolt	Wrought Aluminium alloy Anodised Clear
Release ring material data	POM
Regulating screw material data	High alloy steel, non-corrosive
Swivel joint material data	Zinc die-casting