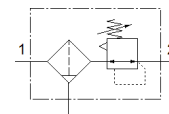
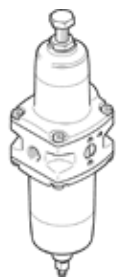


filter regulator

PCRP-64-N14-12-C-R1-M-T19

Part number: 5394666

FESTO



Data sheet

Feature	Value
Size	64
Series	P
Actuator lock	Adjusting screw with lock
Assembly position	Vertical +/- 5°
Grade of filtration	5 µm
Condensate drain	manual rotary
Design structure	Filter regulator without pressure gauge
Conforms to standard	NACE MR0175/ISO 15156 (housing and bowl)
Max. condensate volume	30 cm ³
Controller function	with initial pressure compensation with secondary exhaust
Pressure gauge	Prepared for G1/4
Operating pressure MPa	0.1 ... 2 MPa
Operating pressure	1 ... 20 bar
Pressure regulation range	0.5 ... 12 bar
Max. pressure hysteresis	0.2 bar
Max. standard flow rate	2,400 l/min
Standard nominal flow rate	1,920 l/min
Operating medium	Compressed air to ISO 8573-1:2010 [-:4:-] Inert gases
Note on operating and pilot medium	Lubricated operation possible (subsequently required for further operation)
PWIS conformity	VDMA24364 zone III
Storage temperature	-60 ... 80 °C
Air purity class at output	Compressed air in accordance with ISO8573-1:2010 [6:4:4]
Medium temperature	-60 ... 80 °C
Ambient temperature	-60 ... 80 °C
Product weight	1,965 g
Mounting type	Line installation With mounting kit Optional
Pressure gauge connection	G1/4
Pneumatic connection, port 1	NPT1/4-18
Pneumatic connection, port 2	NPT1/4-18
Material of drain screw	High alloy steel, non-corrosive
Material number of drain screw	1.4404/316L
Material of filter holder	Stainless steel casting
Material number of filter support	1.4409/CF3M(316L)
Materials note	Conforms to RoHS
Material mounting bracket	High alloy steel, non-corrosive
Material seals	CR NBR VMQ
Material spring	High alloy steel, non-corrosive
Material filter	High alloy steel, non-corrosive
Material number of filter	1.4404/316L

Feature	Value
Material housing	Stainless steel casting
Material number for housing	1.4409/CF3M(316L)
Material adjusting screw	High alloy steel, non-corrosive
Material bowl	Stainless steel casting
Material number of bowl	1.4409/CF3M (316L)