

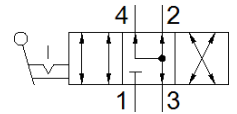
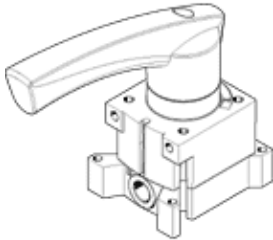
hand lever valve

VHER-AH-M04E-G14-LD

Part number: 538186

FESTO

In metal version with position sensing of the hand lever setting, 4/3-way valve function normally exhausted, outgoing direction to the side.



Data sheet

Feature	Value
Valve function	4/3 exhausted
Type of actuation	manual
Standard nominal flow rate	1,150 l/min
Operating pressure	-0.95 ... 10 bar
Design structure	Rotary slide valve
Nominal size	8 mm
Exhaust-air function	throttleable
Sealing principle	Hard
Type of piloting	direct
Flow direction	reversible
Freedom from overlap	Yes
Signal status display	with accessories
Operating medium	Compressed air in accordance with ISO8573-1:2010 [7:4:4]
Note on operating and pilot medium	Lubricated operation possible (subsequently required for further operation)
Corrosion resistance classification CRC	2
Ambient temperature	-20 ... 80 °C
Actuation torque	2.8 Nm
Product weight	560 g
Mounting type	Optional Front panel installation with through hole
Pneumatic connection, port 1	G1/4
Pneumatic connection, port 2	G1/4
Pneumatic connection, port 3	G1/4
Pneumatic connection, port 4	G1/4
Materials note	Free of copper and PTFE Contains PWIS substances
Materials information for seals	NBR
Materials information, housing	Aluminium die cast