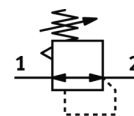


# precision pressure regulator MS6N-LRP-1/4-D2-A8-Z

Part number: 538030

FESTO

indirectly controlled regulators, working pressure up to 0.7 bar,  
pressure outlet to front.



## Data sheet

| Feature                                 | Value   |
|---|---|
| Size                                    | 6   |
| Series                                  | MS  |
| Actuator lock                           | Rotary knob with lock   |
| Assembly position                       | Any   |
| Design structure                        | Piloted precision diaphragm regulator   |
| Controller function                     | Output pressure constant<br>with secondary exhaust                            |
| Pressure gauge                          | Prepared for G1/8   |
| Operating pressure MPa                  | 0.1 ... 1.4 MPa   |
| Operating pressure                      | 1 ... 14 bar  |
| Pressure regulation range               | 0.05 ... 0.7 bar  |
| Max. pressure hysteresis                | 0.02 bar  |
| Flow rate, secondary venting            | ≥ 220 l/min   |
| Standard nominal flow rate              | ≥ 800 l/min   |
| Operating medium                        | Compressed air in accordance with ISO8573-1:2010 [7:4:4]<br>Inert gases       |
| Note on operating and pilot medium      | Lubricated operation not possible   |
| Corrosion resistance classification CRC | 2 - Moderate corrosion stress   |
| PWIS conformity                         | VDMA24364-B2-L  |
| Storage temperature                     | -10 ... 60 °C   |
| Medium temperature                      | -10 ... 60 °C   |
| Ambient temperature                     | -10 ... 60 °C   |
| Product weight                          | 1,000 g   |
| Mounting type                           | Front panel installation<br>Line installation<br>with accessories<br>Optional |
| Pneumatic connection, port 1            | 1/4 NPT   |
| Pneumatic connection, port 2            | 1/4 NPT   |
| Pneumatic connection, port 3            | G1/4  |
| Materials note                          | Conforms to RoHS  |
| Material seals                          | NBR   |
| Material housing                        | Aluminium   |