

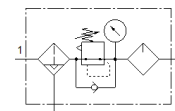
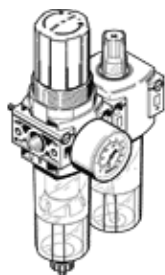
service unit FRC-1/4-DB-7-MINI-H

Part number: 537656
Product to be discontinued

FESTO

Filter/pressure regulator/lubricator combination, maximum outlet pressure 7 bar, 40 µm filter. With pressure gauge and with directly controlled pressure regulating valve.

Type to be discontinued. Available until 2027. See Support Portal for alternative products.



Data sheet

| Feature | Value |
|---|---|
| Size | Mini |
| Width | 88 mm |
| Series | DB |
| Actuator lock | Rotary knob with lock |
| Assembly position | Vertical +/- 5° |
| Condensate drain | semi-automatic |
| Design structure | Filter regulator/lubricator |
| Grade of filtration | 40 µm |
| Controller function | with secondary exhaust with return flow |
| Pressure gauge | with pressure gauge |
| Operating pressure MPa | 0.15 ... 1 MPa |
| Operating pressure | 1.5 ... 10 bar |
| Pressure regulation range | 0.5 ... 7 bar |
| Max. pressure hysteresis | 0.5 bar |
| Standard nominal flow rate | >= 650 l/min |
| Operating medium | Compressed air in accordance with ISO8573-1:2010 [-:-:-] Inert gases |
| Approved oils | Festo special oil in 1-litre containers Order code: 152 811 OFSW-32 ARAL Vitam GF 32 BP Energol HLP 32 ESSO Nuto H 32 MOBIL DTE 24 SHELL Tellus Oil DO 32 Range of viscosity 32mm ² /s at 40°C ISO class VG 32 to ISO 3448 |
| Corrosion resistance classification CRC | 1 - Low corrosion stress |
| PWIS conformity | VDMA24364-B1/B2-L |
| Air purity class at output | Compressed air to ISO 8573-1:2010 [7:8:-] Inert gases |
| Medium temperature | -5 ... 50 °C |
| Oil viscosity | ISO VG 32 |
| Ambient temperature | -5 ... 50 °C |
| Product weight | 300 g |
| Mounting type | Line installation with through hole With mounting bracket Optional |
| Pressure gauge connection | G1/8 |
| Pneumatic connection, port 1 | G1/4 |

| Feature | Value |
|------------------------------|---------------|
| Pneumatic connection, port 2 | G1/4 |
| Material seals | NBR |
| Material rotary knob | POM |
| Material filter | PE |
| Material housing | PA-reinforced |
| Material bowl | PC |