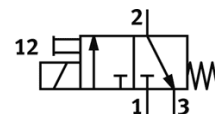
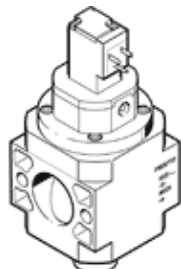


On-off valve HEE-D-MAXI-24-EX

Part number: 536686

FESTO

For service units, without threaded connection plates with FRB threaded pin



Data sheet

| Feature | Value |
|---|---|
| Design structure | Piston slide |
| Type of actuation | electrical |
| Sealing principle | soft |
| Exhaust-air function | not throttleable |
| Manual override | detenting |
| Type of reset | mechanical spring |
| Type of piloting | Piloted |
| Valve function | 3/2 closed, monostable |
| Operating pressure | 2.5 ... 16 bar |
| Duty cycle | 100% |
| Characteristic coil data | 24V DC: 2,5W |
| Permissible voltage fluctuation | +/- 10 % |
| Operating medium | Compressed air in accordance with ISO8573-1:2010 [7:4:4] Inert gases |
| Note on operating and pilot medium | Lubricated operation possible (subsequently required for further operation) |
| Corrosion resistance classification CRC | 2 |
| Materials note | Conforms to RoHS |
| Medium temperature | -10 ... 60 °C |
| Ambient temperature | -10 ... 60 °C |
| Authorisation | Germanischer Lloyd |
| ATEX category Gas | II 3G |
| Explosion ignition protection type Gas | Ex nA II T4 X |
| ATEX category Dust | II 3D |
| Explosion ignition protection type Dust | Ex tD A22 IP65 T130°C X |
| Explosion-proof ambient temperature | -10°C ≤ Ta ≤ +60°C |
| CE mark (see declaration of conformity) | to EU directive explosion protection (ATEX) |
| Mounting type | Line installation with accessories |
| Assembly position | Any |
| Flow direction | non reversible |
| Product weight | 800 g |
| Pneumatic connection, port 3 | G3/8 |
| Air purity class at output | Compressed air in accordance with ISO8573-1:2010 [7:4:4] Inert gases |
| Pilot air supply | Internal |
| Electrical connection | Plug Per DIN EN 175301-803 Design C |
| Materials information for seals | NBR |
| Materials information, housing | Aluminium die cast |