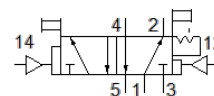
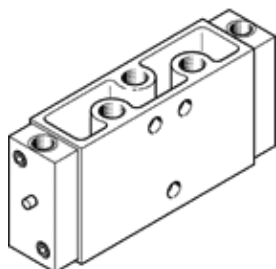


pneumatic valve

JDH-5-1/8-EX

Part number: 536038

FESTO



Data sheet

Feature	Value
Valve function	5/2 bistable-dominant
Type of actuation	pneumatic
Width	26 mm
Standard nominal flow rate	600 l/min
Operating pressure MPa	0 ... 1 MPa
Operating pressure	0 ... 10 bar
Design structure	Poppet seat
Protection class	IP65
CE mark (see declaration of conformity)	to EU directive explosion protection (ATEX)
UKCA marking (see declaration of conformity)	To UK EX instructions
ATEX category Gas	II 2G
ATEX category Dust	II 2D
Explosion ignition protection type Gas	Ex h IIC T4 Gb
Explosion ignition protection type Dust	Ex h IIIC T130°C Db
Explosion-proof ambient temperature	-10°C ≤ Ta ≤ +60°C
Explosion protection certification outside the EU	EPL Db (GB) EPL Gb (GB)
Nominal size	5 mm
Grid dimension	27 mm
Exhaust-air function	throttleable
Sealing principle	soft
Assembly position	Any
Type of piloting	direct
Pilot air supply	external
Flow direction	non reversible
Overlap	Underlap
Pilot pressure MPa	0.23 ... 1 MPa
Pilot pressure	2.3 ... 10 bar
Max. switching frequency	12 Hz
Switching time off	16 ms
Switching time on	9 ms
Switching time reversal	7 ms
Max. positive test pulse with logic 0	2,200 µs
Max. negative test pulse with logic 1	3,700 µs
Operating medium	Compressed air in accordance with ISO8573-1:2010 [7:4:4]
Note on operating and pilot medium	Lubricated operation possible (subsequently required for further operation)
Corrosion resistance classification CRC	1 - Low corrosion stress
PWIS conformity	VDMA24364-B1/B2-L
Storage temperature	-20 ... 60 °C
Medium temperature	-10 ... 60 °C
Ambient temperature	-10 ... 60 °C
Product weight	330 g
Mounting type	on manifold rail with through hole Optional

Feature	Value
Scavenging orifice connection	M5
Pilot air port 12	G1/8
Pilot air port 14	G1/8
Pneumatic connection, port 1	G1/8
Pneumatic connection, port 2	G1/8
Pneumatic connection, port 3	G1/8
Pneumatic connection, port 4	G1/8
Pneumatic connection, port 5	G1/8
Materials note	Conforms to RoHS
Material seals	NBR TPE-U(PU)
Material housing	Aluminium die cast