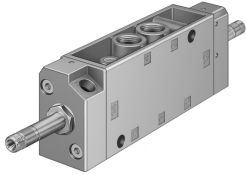


# Solenoid valve JMFH-5-1/4-EX

Part number: 535913

FESTO



## Data sheet

| Feature   | Value   |
|---|---|
| Valve function                                    | 5/2 double solenoid                           |
| Type of actuation                                 | Electric                                      |
| Construction width                                | 30.5 mm                                       |
| Standard nominal flow rate                        | 1100 l/min                                    |
| pneumatic working port                            | G1/4  |
| Operating voltage                                 | Via solenoid coil, must be ordered separately |
| Operating pressure                                | 0.15 MPa...0.8 MPa<br>1.5 bar...8 bar         |
| Design  | Poppet seat                                   |
| CE mark (see declaration of conformity)           | To EU Explosion Protection Directive (ATEX)   |
| Explosion protection certification outside the EU | EPL Db (GB)<br>EPL Gb (GB)                    |
| CE marking (see declaration of conformity)        | To UK EX instructions                         |
| ATEX category gas                                 | II 2G   |
| ATEX category dust                                | II 2D   |
| Explosion ignition protection type for gas        | Ex h IIC T4 Gb                                |
| Explosion ignition protection type for dust       | Ex h IIIC T130°C Db                           |
| Explosion ambient temperature                     | -5°C ≤ Ta ≤ +40°C                             |
| Degree of protection                              | IP65  |
| Nominal size                                      | 7 mm  |
| Grid dimension                                    | 32 mm   |
| Exhaust-air function                              | With flow control option                      |
| Sealing principle                                 | Soft  |
| Mounting position                                 | optional                                      |
| Manual override                                   | Detenting                                     |
| Type of piloting                                  | Pilot actuated                                |
| Flow direction                                    | Non-reversible                                |
| lap   | Underlap                                      |
| Max. switching frequency                          | 25 Hz   |
| Switching time reversal                           | 11 ms   |
| Max. positive test pulse with 0 signal            | 2200 μs                                       |
| Max. negative test pulse with 1 signal            | 3700 μs                                       |

| Feature                            | Value   |
|------------------------------------|---|
| Characteristic coil data           | See solenoid coil, to be ordered separately   |
| Explosion protection               | Zone 1 (ATEX)<br>Zone 1 (UKEX)<br>Zone 2 (ATEX)<br>Zone 21 (ATEX)<br>Zone 21 (UKEX)<br>Zone 22 (ATEX) |
| Operating medium                   | Compressed air to ISO 8573-1:2010 [7:4:4]   |
| Note on operating and pilot medium | Lubricated operation possible (in which case lubricated operation will always be required)            |
| Corrosion resistance class CRC     | 1 - Low corrosion stress  |
| LABS (PWIS) conformity             | VDMA24364-B1/B2-L   |
| Storage temperature                | -20 °C...60 °C  |
| Media temperature                  | -5 °C...40 °C   |
| Ambient temperature                | -5 °C...40 °C   |
| Product weight                     | 344 g   |
| Electrical connection              | Via F coil, to be ordered separately  |
| Type of mounting                   | Either:<br>On manifold rail<br>With through-hole  |
| Breather connection                | M5  |
| Pilot exhaust port 82              | M5  |
| Pilot exhaust port 84              | M5  |
| Pneumatic connection, port 1       | G1/4  |
| Pneumatic connection, port 2       | G1/4  |
| Pneumatic connection, port 3       | G1/4  |
| Pneumatic connection, port 4       | G1/4  |
| Pneumatic connection, port 5       | G1/4  |
| Note on materials                  | RoHS-compliant  |
| Material seals                     | NBR<br>TPE-U(PU)  |
| Material housing                   | Die-cast aluminium  |