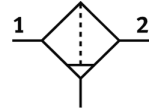
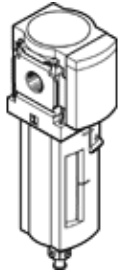


Filter MS4-LF-1/8-EUM

Part number: 535644

FESTO

40 µm filter, metal bowl, manual condensate drain, direction of flow:
from left to right.



Data sheet

| Feature | Value |
|---|--|
| Size | 4 |
| Series | MS |
| Assembly position | Vertical +/- 5° |
| Grade of filtration | 40 µm |
| Condensate drain | manual rotary |
| Design structure | Sintered filter with centrifugal separator |
| Max. condensate volume | 25 ml |
| Bowl guard | integrated as metal shell |
| Operating pressure | 0 ... 14 bar |
| Standard nominal flow rate | 1,100 l/min |
| Operating medium | Compressed air to ISO 8573-1:2010 [-:9:-] Inert gases |
| Corrosion resistance classification CRC | 2 |
| Storage temperature | -10 ... 60 °C |
| Air purity class at output | Compressed air in accordance with ISO8573-1:2010 [7:8:4] |
| Medium temperature | -10 ... 60 °C |
| Ambient temperature | -10 ... 60 °C |
| Product weight | 349 g |
| Mounting type | Optional Line installation with accessories |
| Pneumatic connection, port 1 | G1/8 |
| Pneumatic connection, port 2 | G1/8 |
| Materials note | Free of copper and PTFE Conforms to RoHS |
| Materials information for seals | NBR |
| Materials information for filter | PE |
| Materials information, housing | Aluminium die cast |
| Materials information for bowl | Aluminium die cast Wrought Aluminium alloy |
| Materials info, viewing window | PA |