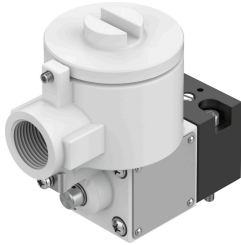


# Pilot valve MGXDH-3/2-1.2-230AC-EX

Part number: 535617

FESTO



## Data sheet

Feature	Value
Valve function	3/2-way, closed, monostable
Type of actuation	Electric
Operating pressure	-0.09 MPa...0.8 MPa -0.9 bar...8 bar -13.05 psi...116 psi
Design	On/off valve
Type of reset	Mechanical spring
CE mark (see declaration of conformity)	To EU Explosion Protection Directive (ATEX)
Explosion protection certification outside the EU	EPL Db (CN) EPL Db (IEC-EX) EPL Gb (CN) EPL Gb (IECEX)
Certificate issuing authority	ATEX: CML 15 ATEX 1119X CCC-Ex: 2020322307001701 IEC: IECEx CML 17.0147X
ATEX category gas	II 2G
ATEX category dust	II 2D
Explosion ignition protection type for gas	ATEX: Ex db IIC T4 Gb CCC-Ex: Ex d IIC T3/T6 Gb
Explosion ignition protection type for dust	Ex tb IIIC T135°C Db
Explosion ambient temperature	ATEX: -65°C ≤ Ta ≤ +40°C CCC-Ex: -20°C ≤ Ta ≤ +40°C
Degree of protection	IP66
Manual override	Detenting
Flow direction	Non-reversible
Duty cycle	100%
Insulation material class	H
Characteristic coil data	230 V AC: 50/60 Hz, pick-up power 10.0 VA, holding power 6.0 VA
Permissible frequency fluctuations	+/- 10%

Feature	Value
Explosion protection	Zone 1 (ATEX) Zone 1 (CN) Zone 1 (IEC-EX) Zone 2 (ATEX) Zone 21 (ATEX) Zone 21 (CN) Zone 21 (IEC-EX) Zone 22 (ATEX)
Operating medium	Compressed air to ISO 8573-1:2010 [7:4:4]
Note on operating and pilot medium	Lubricated operation possible (in which case lubricated operation will always be required)
Corrosion resistance class CRC	2 - Moderate corrosion stress
LABS (PWIS) conformity	VDMA24364 zone III
Ambient temperature	-20 °C...80 °C
Type of mounting	CNOMO
Note on materials	RoHS-compliant