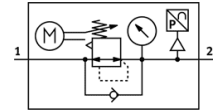
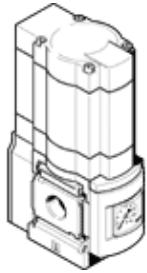


Electrical pressure regulator MS6-LRE-3/8-D6-PI

Part number: 535374

FESTO

Indirectly controlled regulators, working pressure up to 7 bar.



Data sheet

| Feature | Value |
|--|--|
| Size | 6 |
| Series | MS |
| Assembly position | Preferably vertical Any |
| Design structure | Electrically adjustable pressure regulator |
| Short circuit strength | for all electrical connections |
| Controller function | Output pressure constant with initial pressure compensation with secondary exhaust |
| Pressure gauge | with pressure gauge |
| Operating pressure | 0.8 ... 20 bar |
| Pressure control range | 0.3 ... 7 bar |
| Max. pressure hysteresis | 0.25 bar |
| Standard nominal flow rate | 5,800 l/min |
| Analogue output | 4 - 20 mA |
| Duration of control at 25°C | Max. 90 s |
| Type of inputs | Per IEC 61131-2 No electrical isolation |
| Nominal operating voltage DC | 24 V |
| Current consumption at nominal operating voltage | Max. 1 A |
| Current consumption | Max. 3.5 A at 24 VDC |
| Control duration/ interval ratio | 1:3 |
| Permissible voltage fluctuation | +/- 10 % |
| Operating medium | Compressed air in accordance with ISO8573-1:2010 [7:4:4] |
| CE mark (see declaration of conformity) | to EU directive for EMC |
| Corrosion resistance classification CRC | 2 |
| Storage temperature | -10 ... 50 °C |
| Medium temperature | 0 ... 50 °C |
| Protection class | IP65 |
| Ambient temperature | 0 ... 50 °C |
| Product weight | 1,280 g |
| Analogue outputs, absolute accuracy at 25° C | ± 3% |
| Cable interface | Input: M12x1 plug, 5-pin Output: M8x1 plug, 3-pin |
| Mounting type | Optional Line installation with accessories |
| Pneumatic connection, port 1 | G3/8 |
| Pneumatic connection, port 2 | G3/8 |
| Materials information for seals | NBR |
| Materials information, housing | Aluminium die cast |
| Materials information for membrane | NBR |