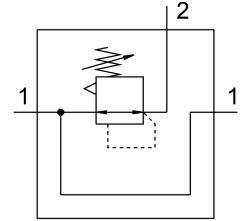
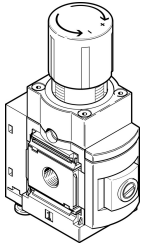


Precision pressure regulator MS6N-LRPB-1/2-D2-A8-BI

Part number: 534937

FESTO



Data sheet

Feature	Value
Size	6
Series	MS
Actuator lock	Rotary knob with detent
Mounting position	optional
Design	Piloted precision diaphragm control valve
Controller function	Output pressure constant With secondary venting
Pressure gauge (ANALOG) or Pressure display (DIGITAL)	Prepared for G1/8
Operating pressure	0.1 MPa...1.4 MPa 1 bar...14 bar
Pressure regulation range	0.05 bar...0.7 bar
Max. pressure hysteresis	0.02 bar
Flow rate of secondary exhaust	220 l/min
Standard nominal flow rate	1600 l/min
Operating medium	Compressed air to ISO 8573-1:2010 [7:4:4] Inert gases
Note on operating and pilot medium	Lubricated operation not possible
Corrosion resistance class CRC	2 - Moderate corrosion stress
LABS (PWIS) conformity	VDMA24364-B2-L
Storage temperature	-10 °C...60 °C
Media temperature	-10 °C...60 °C
Ambient temperature	-10 °C...60 °C
Product weight	1000 g
Type of mounting	Either: Front panel mounting In-line installation With accessories
Pneumatic connection, port 1	1/2 NPT
Pneumatic connection, port 2	1/2 NPT
Pneumatic connection, port 3	G1/4
Note on materials	RoHS-compliant
Material seals	NBR

Feature	Value
Material housing	Aluminium