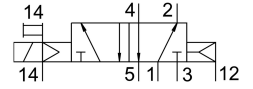
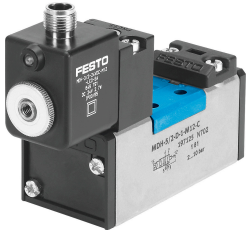


# Solenoid valve MDH-5/2-D-1-S-M12-C

Part number: 533332

FESTO



## Data sheet

Feature	Value
Valve function	5/2-way, monostable
Type of actuation	Electric
Construction width	42 mm
Standard nominal flow rate	1200 l/min
pneumatic working port	Sub-base size 1 to ISO 5599-1 G1/4
Operating voltage	24V DC
Operating pressure	-0.9 bar...16 bar
Design	Piston gate valve
Type of reset	Pneumatic spring
Degree of protection	IP65
Nominal size	8 mm
Grid dimension	43 mm
Exhaust-air function	With flow control option
Sealing principle	Soft
Mounting position	optional
Conforms to standard	ISO 5599-1
Manual override	Non-detenting
ISO code	164
Type of piloting	Pilot actuated
Pilot air supply	External
Flow direction	Reversible
lap	Positive overlap
Pilot pressure	3 bar...10 bar
Switching time off	36 ms
Switching time on	25 ms
Duty cycle	100%
Max. positive test pulse with 0 signal	3800 µs
Max. negative test pulse with 1 signal	4900 µs
Characteristic coil data	24 V DC: 2.7 W
Permissible voltage fluctuations	+/- 10 %
Operating medium	Compressed air to ISO 8573-1:2010 [7:4:4]

Feature	Value
Note on operating and pilot medium	Lubricated operation possible (in which case lubricated operation will always be required)
Vibration resistance	Transport application test with severity level 1 to FN 942017-4 and EN 60068-2-6
Shock resistance	Shock test with severity level 2 to FN 942017-5 and EN 60068-2-27
LABS (PWIS) conformity	VDMA24364-B1/B2-L
Media temperature	-10 °C...50 °C
Sound pressure level	85 dB(A)
Pilot medium	Compressed air to ISO 8573-1:2010 [7:4:4]
Ambient temperature	-10 °C...50 °C
Product weight	420 g
Electrical connection	M12x1
Type of mounting	On sub-base With through-hole
Pilot air port 12	Sub-base
Pilot air port 14	Sub-base
Pneumatic connection, port 1	Sub-base size 1 to ISO 5599-1
Pneumatic connection, port 2	Sub-base size 1 to ISO 5599-1
Pneumatic connection, port 3	Sub-base size 1 to ISO 5599-1
Pneumatic connection, port 4	Sub-base size 1 to ISO 5599-1
Pneumatic connection, port 5	Sub-base size 1 to ISO 5599-1
Material seals	HNBR NBR
Material housing	Die-cast aluminium