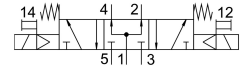


Solenoid valve MDH-5/3B-D-2-M12-C

Part number: 533006

FESTO



Data sheet

| Feature | Value |
|--|---|
| Valve function | 5/3-way, pressurised |
| Type of actuation | Electric |
| Construction width | 54 mm |
| Standard nominal flow rate | 2300 l/min |
| pneumatic working port | Sub-base size 2 to ISO 5599-1 G3/8 |
| Operating voltage | 24V DC |
| Operating pressure | 3 bar...10 bar |
| Design | Piston gate valve |
| Type of reset | Mechanical spring |
| Degree of protection | IP65 |
| Nominal size | 11.5 mm |
| Grid dimension | 56 mm |
| Exhaust-air function | With flow control option |
| Sealing principle | Soft |
| Mounting position | optional |
| Conforms to standard | ISO 5599-1 |
| Manual override | Non-detenting |
| ISO code | 258 |
| Type of piloting | Pilot actuated |
| Pilot air supply | Internal |
| Flow direction | Non-reversible |
| lap | Positive overlap |
| Switching time off | 70 ms |
| Switching time on | 35 ms |
| Duty cycle | 100% |
| Max. positive test pulse with 0 signal | 3800 µs |
| Max. negative test pulse with 1 signal | 4900 µs |
| Characteristic coil data | 24 V DC: 2.7 W |
| Permissible voltage fluctuations | +/- 10 % |
| Operating medium | Compressed air to ISO 8573-1:2010 [7:4:4] |

| Feature | Value |
|------------------------------------|--|
| Note on operating and pilot medium | Lubricated operation possible (in which case lubricated operation will always be required) |
| Vibration resistance | Transport application test with severity level 1 to FN 942017-4 and EN 60068-2-6 |
| Shock resistance | Shock test with severity level 2 to FN 942017-5 and EN 60068-2-27 |
| LABS (PWIS) conformity | VDMA24364-B1/B2-L |
| Media temperature | -10 °C...50 °C |
| Sound pressure level | 85 dB(A) |
| Ambient temperature | -10 °C...50 °C |
| Product weight | 1000 g |
| Electrical connection | M12x1 |
| Type of mounting | On sub-base Via through-hole and screw |
| Pilot exhaust port 82 | M5 |
| Pilot exhaust port 84 | M5 |
| Pneumatic connection, port 1 | Sub-base size 2 to ISO 5599-1 |
| Pneumatic connection, port 2 | Sub-base size 2 to ISO 5599-1 |
| Pneumatic connection, port 3 | Sub-base size 2 to ISO 5599-1 |
| Pneumatic connection, port 4 | Sub-base size 2 to ISO 5599-1 |
| Pneumatic connection, port 5 | Sub-base size 2 to ISO 5599-1 |
| Note on materials | RoHS-compliant |
| Material seals | HNBR NBR |
| Material housing | Die-cast aluminium |