

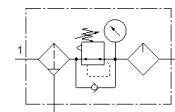
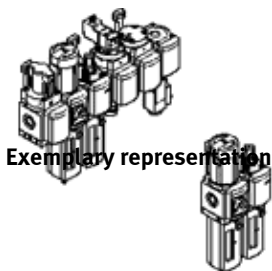
service unit combination

MSB4N

Part number: 532306

FESTO

With NPT thread



Data sheet

Overall data sheet – Individual values depend upon your configuration.

Feature	Value
Size	4
Series	MS
Type of actuation	electrical manual pneumatic
Actuator lock	Rotary knob with integrated lock
Assembly position	Any Vertical +/- 5°
Grade of filtration	0.01 ... 40 µm
Condensate drain	fully automatic manual rotary semi-automatic
Design structure	Branching module Active carbon filter Pressure regulator with gauge Start-up valve On/off valve Fibre filter Filter regulator with pressure gauge Filter regulator without pressure gauge Membrane dryer proportional standard mist lubricator Sintered filter with centrifugal separator With non-return function
Controller function	Output pressure constant with initial pressure compensation with secondary exhaust with return flow
Bowl guard	Plastic guard
Differential pressure display	Visual indicator with pressure sensor
Pressure gauge	with pressure sensor with pressure gauge
Operating pressure	1.5 ... 14 bar
Pressure regulation range	0.3 ... 7 bar
Standard nominal flow rate	800 ... 1,400 l/min
Characteristic coil data	110 V AC: 50/60 Hz, pick-up power 3 VA, holding power 2.4 VA 230 V AC: 50/60 Hz, pick-up power 3 VA, holding power 2.4 VA 24 V DC: 1.5 W 24 V DC: 1.8 W
Authorisation	c UL us - Recognized (OL)
CE mark (see declaration of conformity)	to EU directive for EMC

Feature	Value
	in accordance with EU RoHS directive
UKCA marking (see declaration of conformity)	To UK instructions for EMC To UK RoHS instructions
Note on operating and pilot medium	Lubricated operation possible (subsequently required for further operation)
Corrosion resistance classification CRC	2 - Moderate corrosion stress
PWIS conformity	VDMA24364-B1/B2-L
Storage temperature	-10 ... 60 °C
Food-safe	See Supplementary material information
Medium temperature	-10 ... 60 °C
Ambient temperature	-10 ... 60 °C
Mounting type	with accessories
Pneumatic connection, port 1	1/8 NPT 1/4 NPT
Pneumatic connection, port 2	1/8 NPT 1/4 NPT
Pneumatic connection, port 3	G1/4 1/4 NPT
Material housing	Aluminium die cast
Material bowl	PC