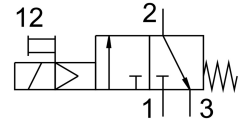


# On/off valve MS6N-EE-1/4-V110

Part number: 532109

FESTO



## Data sheet

Feature	Value
Design	Piston gate valve
Type of actuation	Electric
Exhaust-air function	Without flow control option
Manual override	Detenting Non-detenting
Type of reset	Mechanical spring
Type of piloting	Pilot actuated
Valve function	3/2-way, closed, monostable
Operating pressure	4 bar...18 bar
C value	11 l/sbar
b value	0.5
Standard nominal flow rate	2600 l/min
Duty cycle	100%
Characteristic coil data	110 V AC: 50/60 Hz, pick-up power 3.0 VA, holding power 2.4 VA
Permissible voltage fluctuations	+/- 10 %
Operating medium	Compressed air to ISO 8573-1:2010 [7:4:4] Inert gases
Note on operating and pilot medium	Lubricated operation possible (in which case lubricated operation will always be required)
Corrosion resistance class CRC	2 - Moderate corrosion stress
Note on materials	RoHS-compliant
LABS (PWIS) conformity	VDMA24364-B2-L
Media temperature	-10 °C...60 °C
Degree of protection	IP65
Ambient temperature	-10 °C...60 °C
Approval	c UL us - Recognized (OL)
Suitable for use with food	See supplementary material information
Type of mounting	Either: In-line installation With accessories
Mounting position	optional
Flow direction	Non-reversible
Product weight	740 g

<b>Feature</b>	<b>Value</b>
Pneumatic connection, port 1	1/4 NPT
Pneumatic connection, port 2	1/4 NPT
Pneumatic connection, port 3	G1/2
Pilot air supply	Internal
Electrical connection	Type C Plugs To DIN EN 175301-803 Square design
Material seals	NBR
Material housing	Die-cast aluminium