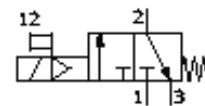


On-off valve MS4N-EE-1/4-V110-Z

Part number: 532085

FESTO

Electrical, direction of flow: from right to left.



Data sheet

Feature	Value
Exhaust-air function	not throttleable
Type of actuation	electrical
Assembly position	Any
Manual override	detenting Pushing
Design structure	Piston slide
Type of reset	mechanical spring
Type of piloting	direct
Pilot air supply	Internal
Flow direction	non reversible
Valve function	3/2 closed monostable
Switching position indicator	with accessories
Operating pressure	4 ... 14 bar
b value	0.44
C value	9.5 l/sbar
Standard nominal flow rate	2,000 l/min
Characteristic coil data	110V AC
Operating medium	Compressed air
Corrosion resistance classification CRC	2
Medium temperature	-10 ... 60 °C
Ambient temperature	-10 ... 60 °C
Product weight	273 g
Electrical connection	Plug Cubic design Design C to DIN 43650
Mounting type	with accessories Optional Line installation
Pneumatic connection, port 1	NPT1/4-18
Pneumatic connection, port 2	NPT1/4-18
Pneumatic connection, port 3	G1/4
Materials note	Free of copper and PTFE
Materials information for seals	NBR
Materials information, housing	Aluminium die cast