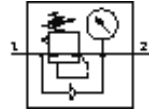
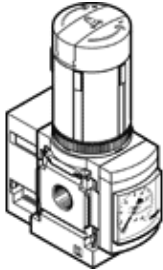


Pressure regulator MS6N-LRB-1/2-D5-AS-BI-Z

Part number: 531825

FESTO

For manifold assembly, angled outlet block with QS push-in connector, 4 bar maximum output pressure, with pressure gauge, P2 connection at front.



Data sheet

| Feature | Value |
|---|--|
| Size | 6 |
| Series | MS |
| Actuator lock | with accessories, lockable |
| Assembly position | Any |
| Design structure | directly-controlled diaphragm regulator with looped-through compressed air supply |
| Controller function | Output pressure constant with initial pressure compensation with secondary exhaust |
| Pressure gauge | with pressure gauge |
| Pressure control range | 0.3 ... 4 bar |
| Inlet pressure 1 | 0.8 ... 20 bar |
| Max. pressure hysteresis | 0.25 bar |
| Standard nominal flow rate | 600 l/min |
| Operating medium | Compressed air |
| Corrosion resistance classification CRC | 2 |
| Storage temperature | -10 ... 60 °C |
| Medium temperature | -10 ... 60 °C |
| Ambient temperature | -10 ... 60 °C |
| Product weight | 747 g |
| Mounting type | with accessories Optional Front panel installation Line installation |
| Pneumatic connection, port 1 | NPT1/2-14 |
| Pneumatic connection, port 2 | QS-8 |
| Materials information for control panel | POM PA |
| Materials information for seals | NBR |
| Materials information, housing | Aluminium die cast |
| Materials information for membrane | NBR |